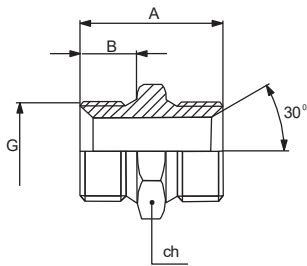


The bond of perfect quality

Manufactures of Hose Adaptors, Ermeto Fittings, Ferrule Fittings & High/Low Pressure Hoses

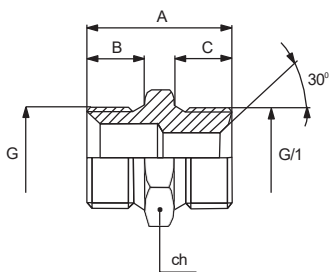
Dimension in mm

BSP male / male adaptor (equal)



G/thread	G/1thread	A	B	C	ch
1/8" -28 TPI	-	30	10	-	14
1/4" -19 TPI	-	36	12	-	19
3/8" -19 TPI	-	37	12.5	-	22
1/2" -14 TPI	-	43	14.5	-	27
5/8" -14 TPI	-	48	16.0	-	30
3/4" -14 TPI	-	49	16.5	-	32
1" -11 TPI	-	56	19	-	41
1" 1/4 -11 TPI	-	60	20	-	50
1" 1/2 -11 TPI	-	64	22	-	55
2" -11 TPI	-	73	25	-	70

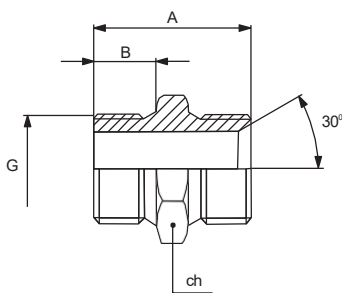
BSP male / male adaptor (reducing)



G/thread	G/1thread	A	B	C	ch
1/4" -19 TPI	1/8" -28 TPI	34	12	10	19
3/8" -19 TPI	1/8" -28 TPI	34.5	12.5	10	22
3/8" -19 TPI	1/4" -19 TPI	36.5	12.5	12	22
1/2" -14 TPI	1/4" -19 TPI	40.5	14.5	12	27
1/2" -14 TPI	3/8" -19 TPI	41	14.5	12.5	27
3/4" -14 TPI	3/8" -19 TPI	45	16.5	12.5	32
3/4" -14 TPI	1/2" -14 TPI	47	16.5	14.5	32
1" -11 TPI	1/2" -14 TPI	51.5	19	14.5	41
1" -11 TPI	3/4" -14 TPI	53	19	16.5	41
1" 1/4 -11 TPI	3/4" -14 TPI	56.5	20	16.5	50
1" 1/4 -11 TPI	1" -11 TPI	59.0	20	19	50
1" 1/2 -11 TPI	1" -11 TPI	61.0	22	19	55
1" 1/2 -11 TPI	1" 1/4 -11 TPI	62.0	22	20	55
2" -11 TPI	1" 1/2 -11 TPI	70.0	25	22	70

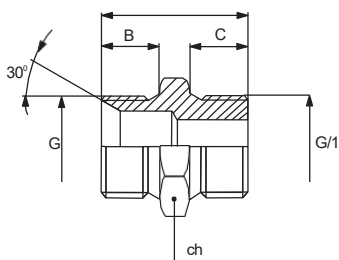
Also available in all combination's

BSP flat male / conus male adaptor (equal)



G/thread	G/1thread	A	B	C	ch
1/8" -28 TPI	-	30	10	-	14
1/4" -19 TPI	-	36	12	-	19
3/8" -19 TPI	-	37	12.5	-	22
1/2" -14 TPI	-	43	14.5	-	27
5/8" -14 TPI	-	48	16	-	30
3/4" -14 TPI	-	49	16.5	-	32
1" -11 TPI	-	56	19	-	41
1" 1/4 -11 TPI	-	60	20	-	50
1" 1/2 -11 TPI	-	64	22	-	55
2" -11 TPI	-	73	25	-	70

BSP male / flat male adaptor (reducing)

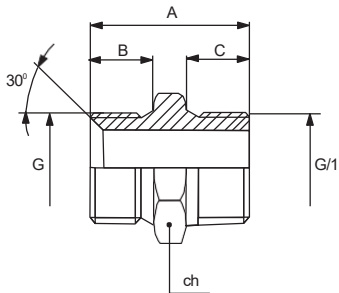


G/thread	G/1thread	A	B	C	ch
1/4" -19 TPI	1/8"-28 TPI	34	12	10.0	19
3/8" -19 TPI	1/4"-19 TPI	34.5	12.5	12.0	22
1/2" -14 TPI	3/8"-19 TPI	41	14.5	12.5	27
3/4" -14 TPI	1/2"-14 TPI	47	16.5	14.5	32
1" -11 TPI	3/4"-14 TPI	53	19	16.5	41
1" 1/4 -11 TPI	1"-11 TPI	59	20	19.0	30
1" 1/2 -11 TPI	1" 1/4-11 TPI	62	22	20.0	55
2" -11 TPI	1" 1/2-11 TPI	70	25	22.0	70

*The above listed items are usually available in the most used types and sizes. Any different item can only be manufactured on request.

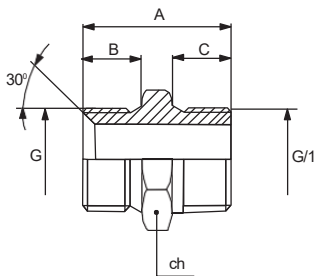
Dimension in mm

BSP to BSPT male / male adaptor



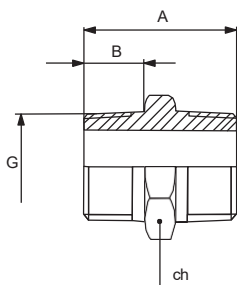
G/thread	G/thread con	G/met	A	B (BSP)	C (BSPT)	ch
1/8" -28 TPI	1/8" -28 TPI	-	29	10	10	14
1/4" -19 TPI	1/4" -19 TPI	-	36	12	14	19
3/8" -19 TPI	3/8" -19 TPI	-	37	12.5	14	22
1/2" -14 TPI	1/2" -14 TPI	-	45.5	14.5	19	27
3/4" -14 TPI	3/4" -14 TPI	-	49.5	16.5	19	32
1" -11 TPI	1" -11 TPI	-	59	19	24	41
1" 1/4 -11 TPI	1" 1/4 -11 TPI	-	62	20	25	50
1" 1/2 -11 TPI	1" 1/2 -11 TPI	-	69	22	27	55
2" -11 TPI	2" -11 TPI	-	75	25	30	70

BSP to NPT male / male adaptor



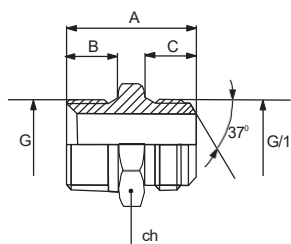
G/thread BSP	G/1 NPT	G/met	A	B (BSP)	C (NPT)	ch
1/8" -28 TPI	1/8" -27 TPI	-	29	10	9.5	14
1/4" -19 TPI	1/4" -18 TPI	-	36	12	14	19
3/8" -19 TPI	3/8" -18 TPI	-	37	12.5	14.5	22
1/2" -14 TPI	1/2" -14 TPI	-	45.5	14.5	19	27
3/4" -14 TPI	3/4" -14 TPI	-	49.5	16.5	19	32
1" -11 TPI	1" -11.5 TPI	-	59	19	24	41
1" 1/4 -11 TPI	1" 1/4 -11.5 TPI	-	62	20	24.5	50
1" 1/2 -11 TPI	1" 1/2 -11.5 TPI	-	69	22	25.5	55
2" -11 TPI	2" -11.5 TPI	-	75	25	26	70

BSPT male / male adaptor



G/thread	G/thread con	A	B	C	ch
-	1/8" -28 TPI	28	10	-	12
-	1/4" -19 TPI	38	14	-	19
-	3/8" -19 TPI	38	14	-	19
-	1/2" -14 TPI	50	19	-	24
-	3/4" -14 TPI	50	19	-	30
-	1" -11 TPI	62	24	-	41
-	1"1/4 -11 TPI	68	25	-	45
-	1"1/2 -11 TPI	70	27	-	50
-	2" -11 TPI	80	30	-	65

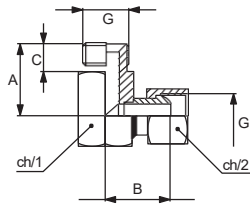
NPT male adaptor / NF-JIC male



G/NPT	G/1 JIC	A	B-NPT	C-JIC	ch
1/8"-27 TPI	7/16" -20 TPI	33	9.5	14	12
1/4"-18 TPI	1/2" -20 TPI	38	14	14	19
3/8"-18 TPI	9/16" -18 TPI	38	14.5	14.1	20
1/2"-14 TPI	3/4" -16 TPI	40	19	16.7	24
3/4"-14 TPI	7/8" -14 TPI	51	19	19.3	30
3/4"-14 TPI	1"1/16" -12 TPI	55	19	22	30
1"-11.5 TPI	1"5/16" -12 TPI	61	24	23	41
1" 1/4-11.5TPI	1"5/8" -12 TPI	65	24.5	24.5	45
1" 1/2-11.5TPI	1"7/8" -12 TPI	71	25.5	27.5	50
2"-11.5 TPI	2"1/2" -12 TPI	85	31	34	65

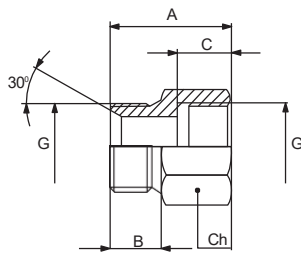
Dimension in mm

BSP 90° male / swivel female adaptor



G/thread	G/1thread con	A	B	C	ch/1	ch/2
1/4" -19 TPI	-	27	23.5	12	19	19
3/8" -19 TPI	-	32	31	12.5	22	22
1/2" -14 TPI	-	37	31.5	14.5	27	27
3/4" -14 TPI	-	42	38	16.5	35	32
1" -1 TPI	-	46	45	19	41	41

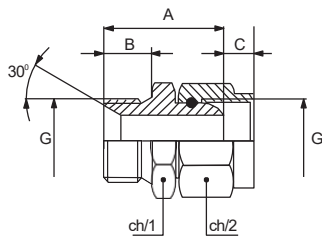
BSP male / female adaptor



G/thread	G/thread	A	B - Male	C - Female	ch
-	1/4" -28 TPI	34	12	17	19
-	3/8" -19 TPI	35	12.5	17	22
-	1/2" -14 TPI	40	14.5	19	27
-	3/4" -14 TPI	43	16.5	20	32
-	1" -11 TPI	50	19	24	41
-	1 1/4" -11 TPI	53	20	26	50
-	1 1/2" -11 TPI	59	22	28	55
-	2" -11 TPI	68	25	33	70

Also available with reducing sizes

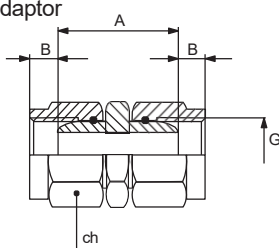
BSP male / swivel female adaptor



G/thread	A	B	C	ch/1	ch/2
1/4" -28 TPI	29	12	5	19	19
3/8" -19 TPI	33	12.5	7	22	22
1/2" -14 TPI	36	14.5	8	27	27
3/4" -14 TPI	42	16.5	9.5	32	32
1" -11 TPI	47.5	19	11.5	41	41

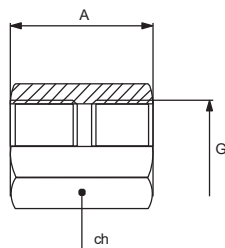
Also available with reducing sizes

BSP swivel female / swivel female adaptor



G/thread	G/1thread con	A	B	C	ch
1/4" -19 TPI	-	30	5	-	19
3/8" -19 TPI	-	34	7	-	22
1/2" -14 TPI	-	37	8	-	27
3/4" -14 TPI	-	43	9.5	-	32
1" -1 TPI	-	48	11.5	-	41

BSP female / female adaptor



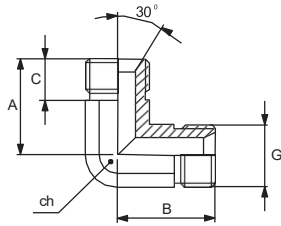
G/thread	G/1thread con	A	B	C	ch
1/4" -19 TPI	-	28	-	-	19
3/8" -19 TPI	-	31	-	-	22
1/2" -14 TPI	-	35	-	-	27
3/4" -14 TPI	-	41	-	-	32
1" -11 TPI	-	45	-	-	41
1 1/4" -11 TPI	-	50	-	-	50
1 1/2" -11 TPI	-	52	-	-	55
2" -11 TPI	-	60	-	-	70

Also available with reducing sizes.

*The above listed items are usually available in the most used types and sizes. Any different item can only be manufactured on request.

Dimension in mm

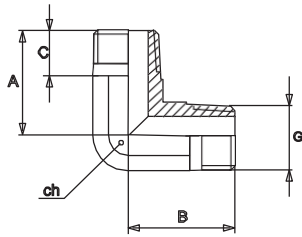
BSP 90° male / male adaptor



G/thread	G/1thread con	A	B	C	ch
1/4" -19 TPI	-	18	18	12	19
3/8" -19 TPI	-	20	20	12.5	22
1/2" -14 TPI	-	22.5	22.5	14.5	27
3/4" -14 TPI	-	27.5	27.5	16.5	32
1" -11 TPI	-	33	33	19	41

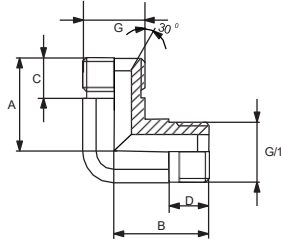
Also available with reducing sizes.

BSP 90° elbow male/male adaptor



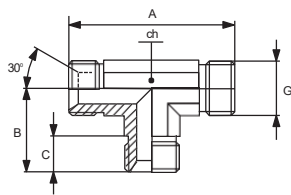
G/thread	G/1thread con	A	B	C	ch
1/4" -19 TPI	1/4" -19 TPI	18	18	12	19
3/8" -19 TPI	3/8" -19 TPI	20	20	12.5	22
1/2" -14 TPI	1/2" -14 TPI	22.5	22.5	14.5	27
3/4" -14 TPI	3/4" -14 TPI	27.5	27.5	16.5	32
1" -11 TPI	1" -11 TPI	33	33	19	41

BSPT 90° elbow male / male adaptor



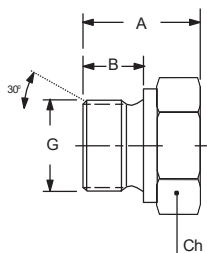
G/thread	G/met	A	B	C	ch
1/4" -19 TPI	-	18	18	14	11
3/8" -19 TPI	-	20	20	14	22
1/2" -14 TPI	-	22.5	22.5	19	27
3/4" -14 TPI	-	27.5	27.5	19	32
1" -11 TPI	-	33	33	24	41

BSP male / male / male TEE adaptor



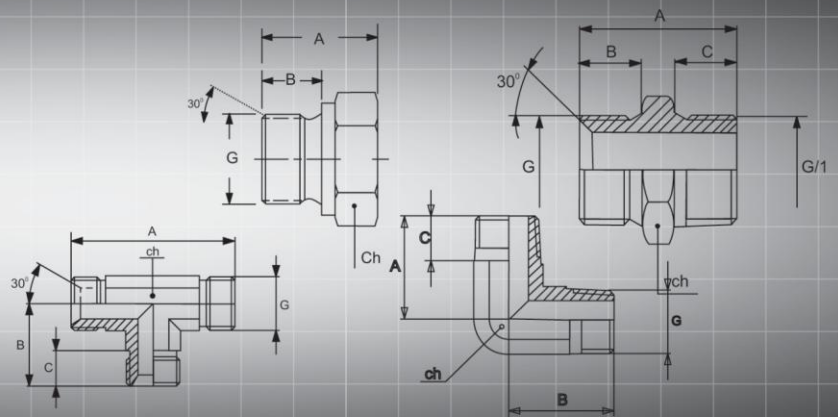
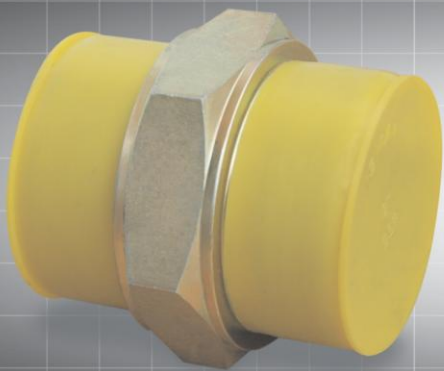
G/thread	G/met	A	B	C	ch
1/4" -19 TPI	-	49.5	18	12	19
3/8" -19 TPI	-	53	19	12.5	22
1/2" - 14 TPI	-	61	22	14.5	27
3/4" - 14 TPI	-	72	26.5	16.5	32
1" -11 TPI	-	98	34	19	41

Hex head plug Male thread:
BSPP (G)-ISO 228



G Male tread BSPP	A	B	Ch
1/8" - 28 TPI	14.5	10	14
1/4" - 19 TPI	20.0	12	19
3/8" - 19 TPI	22.5	12.5	22
1/2" - 14 TPI	24.0	14.5	27
3/4" - 14 TPI	26.0	16.5	32
1" - 11 TPI	27.0	19	41
1 1/4" - 11 TPI	28.0	20	50
1 1/2" - 11 TPI	30.0	22	55

* The above listed items are usually available in the most used types and sizes.
Any different item can only be manufactured on request.



Parker Authorized Assembler

Where quality speaks better



Imaginary for excellent engineering

Power transmission, regulation, effective control of engines and brake systems - one cannot do away with hydraulics in any of these platforms. Just why hoses play a decisive role in any industrial application.

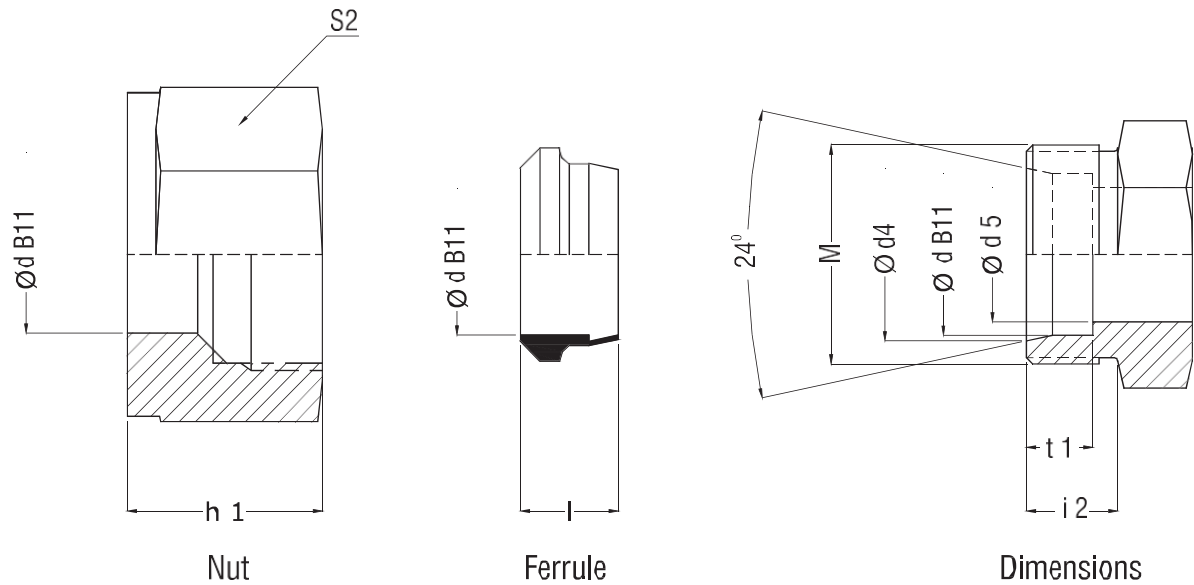
ISMAT Industrial Hoses had a modest beginning in 1983, however it didn't take quite long to emerge into one of the prominent hose traders and manufacturers providing trustworthy hydraulic solutions to a wide network all over. Owing to the excellence displayed in every level of production and control, the products are also in demand abroad.

Stringent observance of SAE (Society of Automotive Engineering) standards, lasting professional relationship with companies of international repute like Markwel, Alfagoma, Manuli and Polyhose; they all set the stage for the products that are qualified to compete with any top player. ISMAT products embrace Earth Movers, Railways, Marines, Cement Industries, Paper, Steel - in other words, the anything and everything of hydraulics.



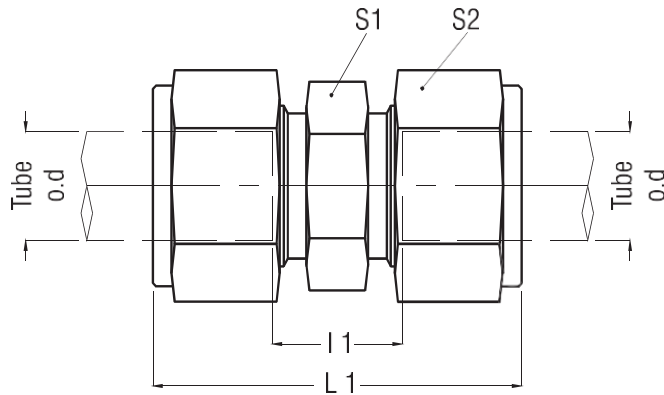
Policy

ISMAT is committed to provide durable, high-quality hydraulic solutions to make sure the satisfied smile in every customer. Products are carefully conceived in a way that perfection overrides in every level. ISMAT also aims to converge its passion to innovate with the ever - evolving technologies, combine an eye for the new with a spirit for achievement.



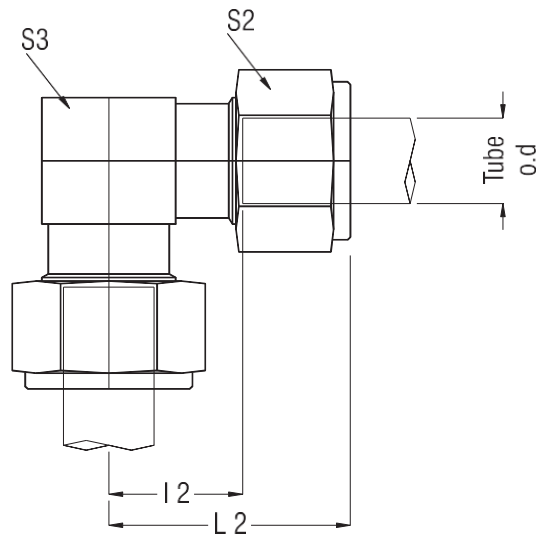
Series	TUBE o.d	DN Size	M	Ø d B11	Ød4	Ød5	t1	i1	S2	h1	l	Part No. Nut	Part No.
LL	4	3	M 8x1.0	4	5.0	3.0	4.0	8	10	11.5	7.0	N6LL	F6LL
Very	5	--	M 10x1.0	5	6.5	3.5	5.5	8	12	11.5	7.0	N5LL	F5LL
Light	6	4	M 10x1.0	6	7.5	4.5	5.5	8	12	12.0	7.0	N6LL	F6LL
NP 100	8	6	M 12x1.0	8	9.5	6.0	5.5	9	14	12.5	7.0	N8LL	F8LL
	6	4	M 12x1.5	6	8.1	4.0	7.0	10	14	14.5	10.0	N6L	F6L
Light L	8	6	M 14x1.5	8	10.1	6.0	7.0	10	17	14.5	9.5	N8L	F8L
NP 250	10	8	M 16x1.5	10	12.3	8.0	7.0	11	19	15.5	10.0	N10L	F10L
	12	10	M 18x1.5	12	14.3	10.0	7.0	11	22	15.5	9.5	N12L	F12L
	15	12	M 22x1.5	15	17.3	12.0	7.0	12	27	17.0	10.0	N15L	F15L
NP 160	18	16	M 26x1.5	18	20.3	15.0	7.5	12	32	18.0	10.0	N18L	F18L
	22	20	M 30x2.0	22	24.3	19.0	7.5	14	36	20.0	10.5	N22L	F22L
	28	25	M 36x2.0	28	30.3	24.0	7.5	14	41	21.0	11.0	N28L	F28L
NP 100	35	32	M 45x2.0	35	38.3	30.0	10.5	16	50	24.0	13.0	N35L	F35L
	42	40	M 52x2.0	42	45.0	36.0	11.0	16	60	24.0	13.0	N42L	F42L
	6	3	M 14x1.5	6	8.1	4.0	7.0	12	17	16.5	10.0	N6S	F6S
Heavy S	8	4	M 16x1.5	8	10.1	5.0	7.0	12	19	16.5	9.5	N8S	F8S
NP 630	10	6	M 18x1.5	10	12.3	7.0	7.5	12	22	17.5	10.0	N10S	F10S
	12	8	M 20x1.5	12	14.3	8.0	7.5	12	24	17.5	9.5	N12S	F12S
	14	10	M 22x1.5	14	16.3	10.0	8.0	14	27	20.5	10.0	N14S	F14S
	16	12	M 24x1.5	16	18.3	12.0	8.5	14	30	20.5	10.0	N16S	F16S
NP 400	20	16	M 30x2.0	20	22.9	16.0	10.5	16	36	24.0	12.0	N20S	F20S
	25	20	M 36x2.0	25	27.9	20.0	12.0	18	46	27.0	12.0	N25S	F25S
	30	25	M 42x2.0	30	33.0	25.0	13.5	20	50	29.0	13.0	N30S	F30S
NP 250	38	32	M 52x2.0	38	41.0	32.0	16.0	22	60	32.5	13.0	N38S	F38S

All Dimensions are in mm.



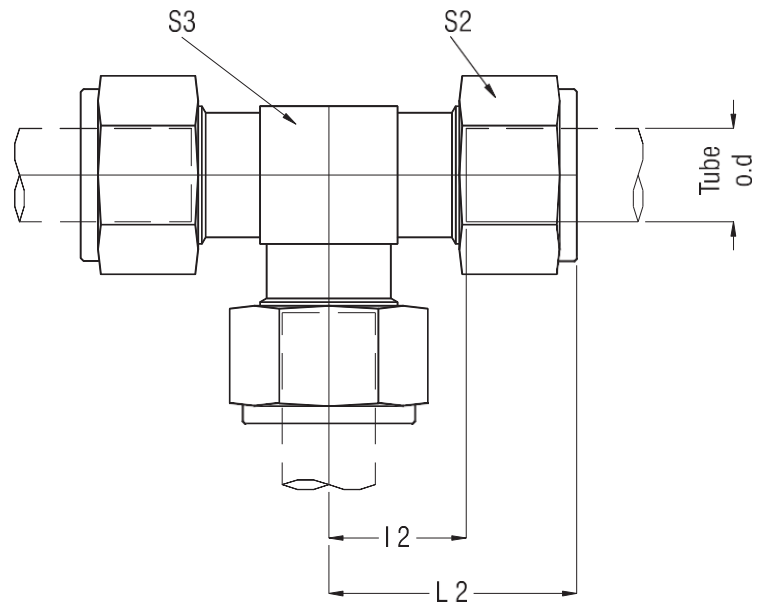
Series	TUBE o.d	l1	L1*	S1	S2	Part No.	
Light L	6	10	41	12	14	SC6L	
	250 bar	8	11	41	14	17	SC8L
		10	13	44	17	19	SC10L
	160 bar	12	14	44	19	22	SC12L
15		16	48	24	27	SC15L	
18		16	50	27	32	SC18L	
100 bar	22	20	54	32	36	SC22L	
	28	21	57	41	41	SC28L	
	35	20	66	46	50	SC35L	
	42	21	68	55	60	SC42L	
Heavy S	6	16	47	14	17	SC6S	
	630 bar	8	18	48	17	19	SC8S
		10	17	51	19	22	SC10S
		12	19	52	22	24	SC12S
400 bar	16	22	59	27	30	SC16S	
	20	23	68	32	36	SC20S	
	25	26	76	41	46	SC25S	
250 bar	30	27	83	46	50	SC30S	
	38	29	92	55	60	SC38S	

* Dimensions given are approx. figures with tightened Nut.



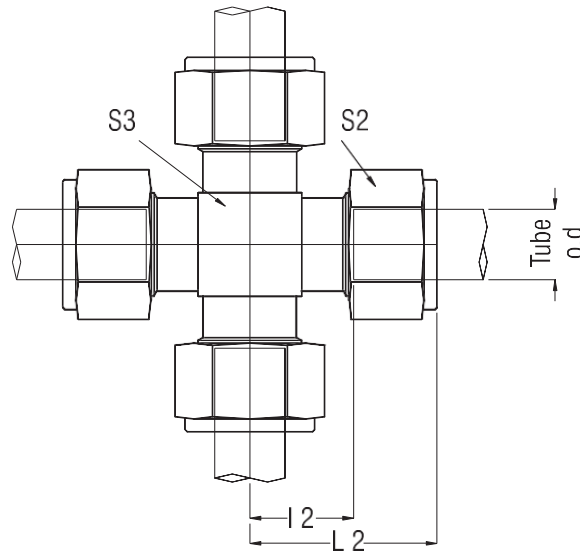
Series	TUBE o.d	I2	L2*	S2	S3	Part No.	
Light L	6	12.0	27.5	14	12	EE6L	
	250 bar	8	14.0	29.0	17	14	EE8L
		10	15.0	30.5	19	17	EE10L
	160 bar	12	17.0	32.0	22	19	EE12L
		15	21.0	37.0	27	22	EE15L
18		23.5	40.5	32	27	EE18L	
22		27.5	44.5	36	30	EE22L	
100 bar	28	30.5	48.5	41	41	EE28L	
	35	34.5	57.5	50	50	EE35L	
	42	40.0	63.5	60	55	EE42L	
Heavy S	6	16.0	31.5	17	14	EE6S	
	630 bar	8	17.0	32.0	19	17	EE8S
		10	17.5	34.5	22	19	EE10S
	400 bar	12	21.5	38.0	24	22	EE12S
		16	24.5	43.5	30	24	EE16S
		20	26.5	49.0	36	30	EE20S
		25	30.0	55.0	46	41	EE25S
	250 bar	30	35.5	63.5	50	50	EE30S
38		41.0	72.5	60	55	EE38S	

* Dimensions given are approx. figures with tightened Nut.



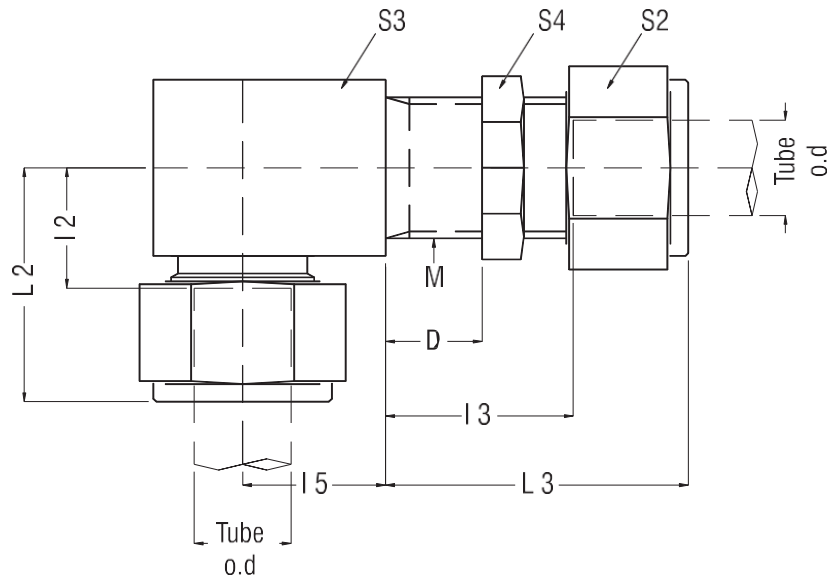
Series	TUBE o.d	I2	L2*	S2	S3	Part No.	
Light L	6	12.0	27.5	14	12	ET6L	
	250 bar	8	14.0	29.0	17	14	ET8L
		10	15.0	30.5	19	17	ET10L
	160 bar	12	17.0	32.0	22	19	ET12L
		15	21.0	37.0	27	24	ET15L
18		23.5	40.5	32	27	ET18L	
100 bar	22	27.5	44.5	36	30	ET22L	
	28	30.5	48.5	41	41	ET28L	
	35	34.5	57.5	50	50	ET35L	
	42	40.0	63.5	60	55	ET42L	
Heavy S	6	16.0	31.5	17	14	ET6S	
	630 bar	8	17.0	32.0	19	17	ET8S
		10	17.5	34.5	22	19	ET10S
	400 bar	12	21.5	38.0	24	22	ET12S
		16	24.5	43.5	30	24	ET16S
		20	26.5	49.0	36	30	ET20S
	250 bar	25	30.0	55.0	46	41	ET25S
		30	35.5	63.5	50	50	ET30S
38		41.0	72.5	60	55	ET38S	

* Dimensions given are approx. figures with tightened Nut.



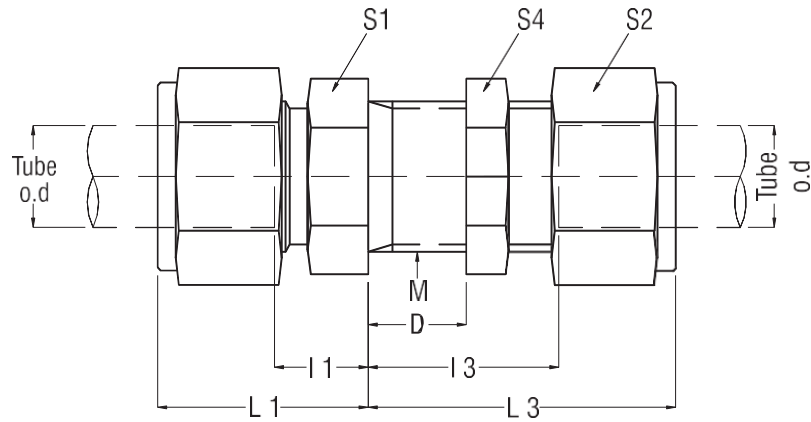
Series	∅d1	I2	L2*	S2	S3	Part No.	
Light L	6	12.0	27.5	14	12	EC6L	
	250 bar	8	14.0	29.0	17	12	EC8L
		10	15.0	30.5	19	14	EC10L
	160 bar	12	17.0	32.0	22	17	EC12L
		15	21.0	37.0	27	22	EC15L
18		23.5	40.5	32	24	EC18L	
22		27.5	44.5	36	27	EC22L	
100 bar		28	30.5	48.5	41	36	EC28L
	35	34.5	57.5	50	41	EC35L	
	42	40.0	63.5	60	50	EC42L	
Heavy S	6	16.0	31.5	17	12	EC6S	
	630 bar	8	17.0	32.0	19	14	EC8S
		10	17.5	34.5	22	17	EC10S
		12	21.5	38.0	24	19	EC12S
	400 bar	16	24.5	43.5	30	24	EC16S
		20	26.5	49.0	36	27	EC20S
		25	30.0	55.0	46	36	EC25S
	250 bar	30	35.5	63.5	50	41	EC30S
38		41.0	72.5	60	50	EC38S	

* Dimensions given are approx. figures with tightened Nut.



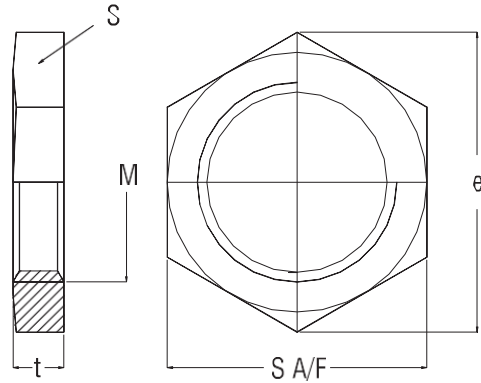
Series	TUBE o.d	M	∅d2	i2	i3	i5	L 2*	L 3*	S2	S3	S4	Part No.	
Light L	6	M 12x1.5	17	12.0	27.0	14	27.5	42.5	14	17	17	EBC6L	
	250 bar	8	M 14x1.5	19	14.0	27.0	17	29.0	42.0	17	19	19	EBC8L
		10	M 16x1.5	22	15.0	28.0	18	30.5	43.5	19	22	22	EBC10L
	160 bar	12	M 18x1.5	24	17.0	29.0	20	32.0	44.0	22	24	24	EBC12L
		15	M 22x1.5	27	21.0	31.0	23	37.0	47.0	27	27	30	EBC15L
18		M 26x1.5	32	23.5	32.5	24	40.5	49.5	32	32	36	EBC18L	
100 bar	22	M 30x2.0	36	27.5	34.5	30	44.5	51.5	36	36	41	EBC22L	
	28	M 36x2.0	42	30.5	35.5	34	48.5	53.5	42	42	46	EBC28L	
	35	M 45x2.0	50	34.5	36.5	39	57.5	59.5	50	50	55	EBC35L	
	42	M 52x2.0	60	40.0	36.0	43	63.5	59.5	60	60	65	EBC42L	
Heavy S	6	M 14x1.5	19	16.0	29.0	17	31.5	44.5	19	19	19	EBC6S	
	630 bar	8	M 16x1.5	22	17.0	29.0	18	32.0	44.0	22	22	22	EBC8S
		10	M 18x1.5	24	17.5	29.5	20	34.5	46.5	24	24	24	EBC10S
	400 bar	12	M 20x1.5	27	21.5	30.5	21	38.0	47.0	27	27	27	EBC12S
		16	M 24x1.5	30	24.5	31.5	24	43.5	50.5	30	30	32	EBC16S
		20	M 30x2.0	36	26.5	33.5	30	49.0	56.0	36	36	41	EBC20S
	250 bar	25	M 36x2.0	42	30.0	35.0	34	55.0	60.0	42	42	46	EBC25S
		30	M 42x2.0	50	35.5	37.5	39	63.5	65.5	50	50	50	EBC30S
38		M 52x2.0	60	41.0	37.0	43	72.5	68.5	60	60	65	EBC38S	

* Dimensions given are approx. figures with tightened Nut.



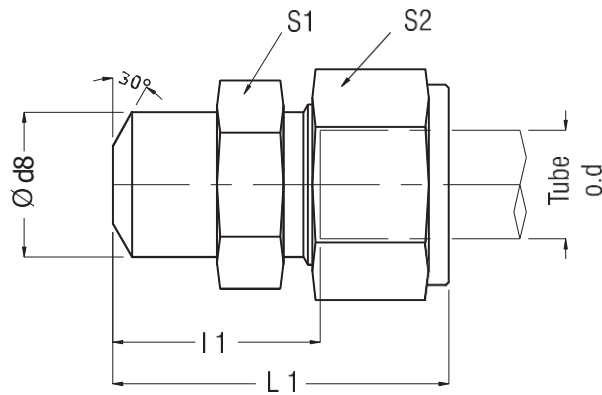
Series	TUBE o.d	M	I1	I3	L 1*	L 3*	S1	S2	S4	Part No.	
Light L	6	M 12x1.5	7.0	27.0	22.5	42.5	17	14	17	SBC6L	
	250 bar	8	M 14x1.5	8.0	27.0	23.0	42.0	19	17	19	SBC08L
		10	M 16x1.5	10.0	28.0	25.5	43.5	22	19	22	SBC10L
		12	M 18x1.5	10.0	29.0	25.0	44.0	24	22	24	SBC12L
		15	M 22x1.5	12.0	31.0	28.0	47.0	27	27	30	SBC15L
160 bar	18	M 26x1.5	13.5	32.5	30.5	49.5	32	32	36	SBC18L	
	22	M 30x2.0	16.5	34.5	33.5	51.5	36	36	41	SBC22L	
	100 bar	28	M 36x2.0	18.5	35.5	36.5	53.5	41	42	46	SBC28L
		35	M 45x2.0	18.5	36.5	41.5	59.5	50	50	55	SBC35L
42		M 52x2.0	19.0	36.0	42.5	59.5	60	60	65	SBC42L	
Heavy S	6	M 14x1.5	12.0	29.0	27.5	44.5	19	19	19	SBC06S	
	630 bar	8	M 16x1.5	13.0	29.0	28.0	44.0	22	22	22	SBC08S
		10	M 18x1.5	14.5	29.5	31.5	46.5	24	24	24	SBC10S
		12	M 20x1.5	14.5	30.5	31.0	47.0	27	27	27	SBC12S
		400 bar	16	M 24x1.5	16.5	31.5	35.5	50.5	32	30	32
20	M 30x2.0		17.5	33.5	40.0	56.0	41	36	41	SBC20S	
25	M 36x2.0		20.0	35.0	45.0	60.0	46	42	46	SBC25S	
250 bar	30	M 42x2.0	21.0	37.5	49.5	65.5	50	50	50	SBC30S	
	38	M 52x2.0	22.0	37.0	53.5	68.5	60	60	65	SBC38S	

* Dimensions given are approx. figures with tightened Nut.



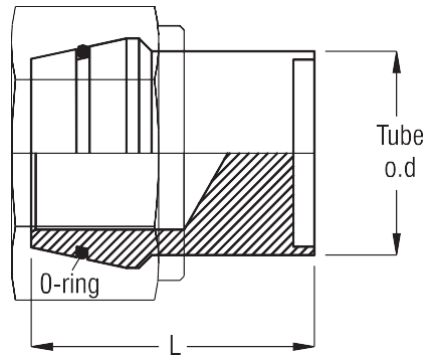
Part No.	M	T	S	-e
LN12	M12 x 1.5	6	17	19.6
LN14	M14 x 1.5	6	19	21.9
LN16	M16 x 1.5	6	22	25.4
LN18	M18 x 1.5	6	24	27.7
LN20	M20 x 1.5	6	27	31.2
LN22	M22 x 1.5	7	30	34.6
LN24	M24 x 1.5	7	32	36.9
LN26	M26 x 1.5	8	36	41.6
LN30	M30 x 2.0	9	41	47.3
LN36	M36 x 2.0	9	46	53.1
LN42	M42 x 2.0	9	50	57.5
LN45	M45 x 2.0	9	55	63.5
LN52	M52 x 2.0	10	65	75.0

* Dimensions given are approx. figures with tightened Nut.

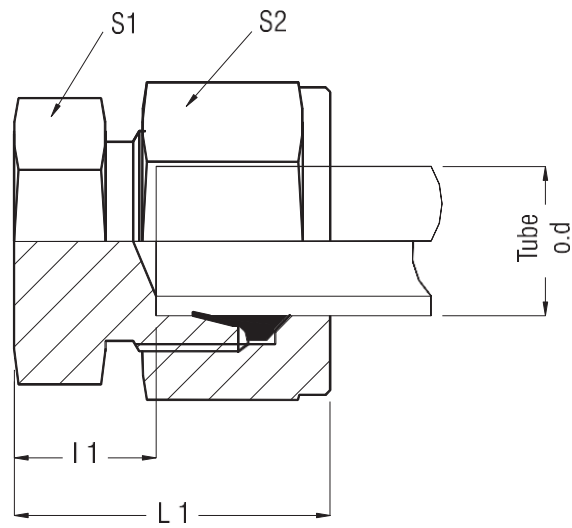


Series	TUBE o.d	Ø d8	l 1	L 1*	S1	S2	Part No.	
Light L	6	10	14.0	29.5	12	14	WC6L	
	250 bar	8	12	16.0	31.0	14	17	WC8L
		10	14	18.0	33.5	17	19	WC10L
160 bar	12	16	18.0	33.0	19	22	WC12L	
	15	19	22.0	38.0	24	27	WC15L	
	18	22	23.5	40.5	27	32	WC18L	
	22	27	28.5	45.5	32	36	WC22L	
100 bar	28	32	30.5	48.5	41	41	WC28L	
	35	40	32.5	55.5	46	50	WC35L	
	42	46	35.0	58.5	55	60	WC42L	
Heavy S	6	11	19.0	34.5	14	17	WC6S	
	630 bar	8	13	21.0	36.0	17	19	WC8S
		10	15	22.5	39.5	19	22	WC10S
		12	17	24.5	41.0	22	24	WC12S
400 bar	16	21	26.5	45.5	27	30	WC16S	
	20	26	29.5	52.0	32	36	WC20S	
	25	31	32.0	57.0	41	46	WC25S	
250 bar	30	36	35.5	63.5	46	50	WC30S	
	38	44	38.0	69.5	55	60	WC38S	

* Dimensions given are approx. figures with tightened Nut.

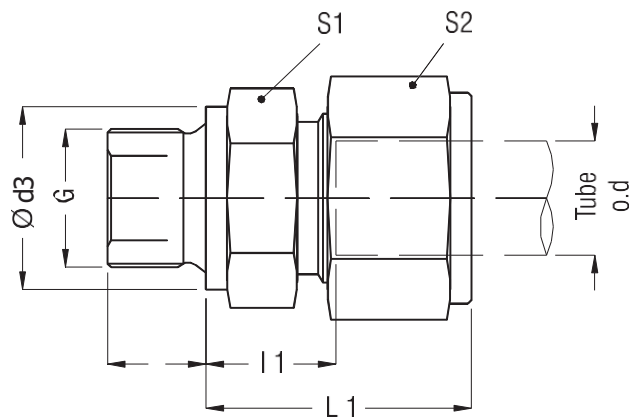


Series	TUBE o.d	L	O-Ring ID x CSD	Part No.
Light L 250 bar	6	17.5	4.0 x 1.5	BP6L
	8	17.0	6.0 x 1.5	BP8L
	10	18.5	7.5 x 1.5	BP10L
	12	18.5	9.0 x 1.5	BP12L
	15	19.0	12.0 x 2.0	BP15L
160 bar	18	20.5	15 x 2.0	BP18L
	22	21.5	20 x 2.0	BP22L
	28	22.0	26 x 2.0	BP28L
100 bar	35	27.5	32 x 2.5	BP35L
	42	28.0	38 x 2.5	BP42L
	Heavy S 630 bar	6	17.5	4.0 x 1.5
8		17.0	6.0 x 1.5	BP8S
10		18.5	7.5 x 1.5	BP10S
12		18.5	9.0 x 1.5	BP12S
14		20.0	10 x 2.0	BP14S
400 bar	16	32.5	12 x 2.0	BP16S
	20	26.0	16.3 x 2.4	BP20S
250 bar	25	28.0	20.3 x 2.4	BP25S
	30	32.5	25.3 x 2.4	BP30S
	38	36.5	33.3 x 2.4	BP38S



Series	Tube od	I 1	L 1*	S1	S2	Part No.	
Light L	6	8.0	23.5	12	14	BE6L	
	250 bar	8	8.0	23.0	14	17	BE8L
		10	9.0	24.5	17	19	BE10L
		12	10.0	25.0	19	22	BE12L
		15	11.0	27.0	22	27	BE15L
160 bar	18	11.5	28.5	27	32	BE18L	
	22	13.5	30.5	30	36	BE22L	
	100 bar	28	14.5	32.5	36	41	BE28L
35		16.5	39.5	46	50	BE35L	
42		19.0	42.5	55	60	BE42L	
Heavy S	6	13.0	28.5	14	14	BE6S	
	630 bar	8	13.0	28.0	17	17	BE8S
		10	12.5	29.5	19	19	BE10S
		12	14.5	31.0	22	22	BE12S
		14	16.0	34.5	22	27	BE14S
	400 bar	16	15.5	34.5	24	32	BE16S
		20	17.5	40.0	30	36	BE20S
25		18.0	43.0	36	41	BE25S	
250 bar	30	22.5	50.5	46	50	BE30S	
	38	23.0	54.5	55	60	BE38S	

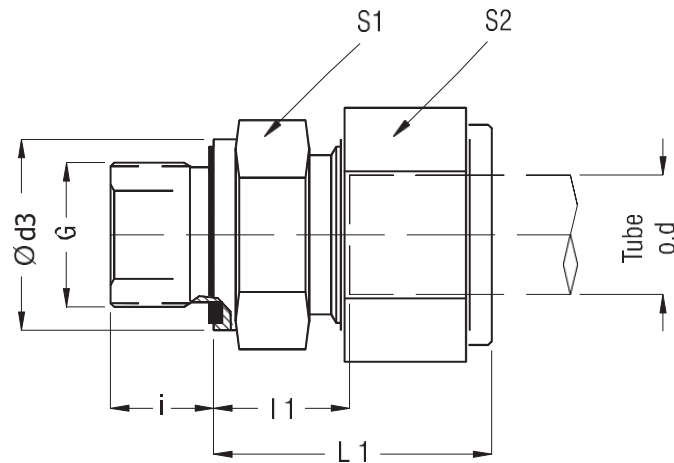
* Dimensions given are approx. figures with tightened Nut.



Series	TUBE o.d	G - Male BSP Threads	Ø d3	i	l1	L1*	S1	S2	Part No.	
Light L	6	G 1/8 A	14	8	8.5	24.0	14	14	MSC6LG01	
	250 bar	8	G 1/4 A	18	12	10.0	19	17	MSC8LG02	
		8	G 3/8 A	22	12	11.5	26.5	22	17	MSC8LG03
		10	G 1/4 A	18	12	11.0	19	19	MSC10LG02	
		10	G 3/8 A	22	12	12.5	28.0	22	19	MSC10LG03
		12	G 1/4 A	18	12	12.0	27.0	19	22	MSC12LG02
		12	G 3/8 A	22	12	12.5	27.5	22	22	MSC12LG03
		12	G 1/2 A	26	14	13.0	28.0	27	22	MSC12LG04
		15	G 1/2 A	26	14	14.0	30.0	27	27	MSC15LG04
160 bar	18	G 1/2 A	26	14	14.5	31.5	27	32	MSC18LG04	
	22	G 3/4 A	32	16	14.5	33.5	32	36	MSC22LG06	
100 bar	28	G 1 A	39	18	16.5	35.5	41	41	MSC28LG08	
	35		49	20	17.5	40.5	50	50	MSC35LG10	
	42	G 1/2 A	55	22	19.0	42.5	55	60	MSC42LG12	
Heavy S	6		18	12	13.5	28.5	19	17	MSC6SG02	
	630 bar	G 1/4 A	18	12	15.0	30.0	19	19	MSC8SG02	
			22	12	15.0	32.0	22	22	MSC10SG03	
		12	G 3/8 A	22	12	17.0	33.5	22	24	MSC12SG03
			26	14	17.5	34.0	27	24	MSC12SG04	
400 bar	16	G 1/2 A	26	14	18.5	37.5	27	30	MSC16SG04	
	20	G 3/4 A	32	16	20.5	43.0	32	36	MSC20SG06	
	25	G 1 A	39	18	23.0	48.0	41	46	MSC25SG08	
250 bar	30	G1 1/4 A	49	20	23.5	51.5	50	50	MSC30SG10	
			55	22	26.0	57.5	55	60	MSC38SG12	

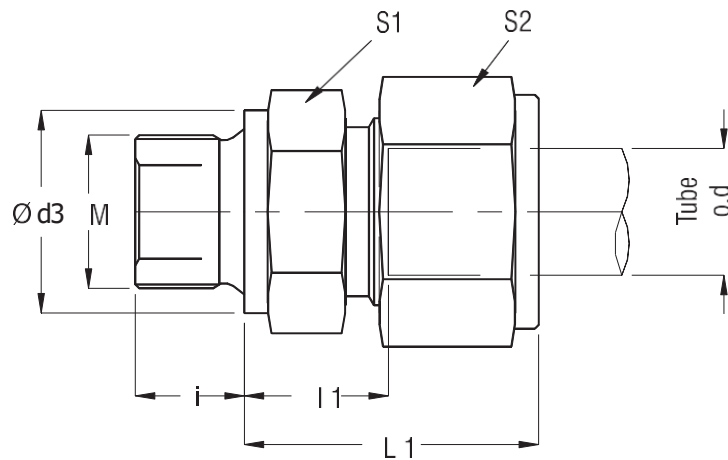
* Dimensions given are approx. figures with tightened Nut.

All Dimensions are in mm.



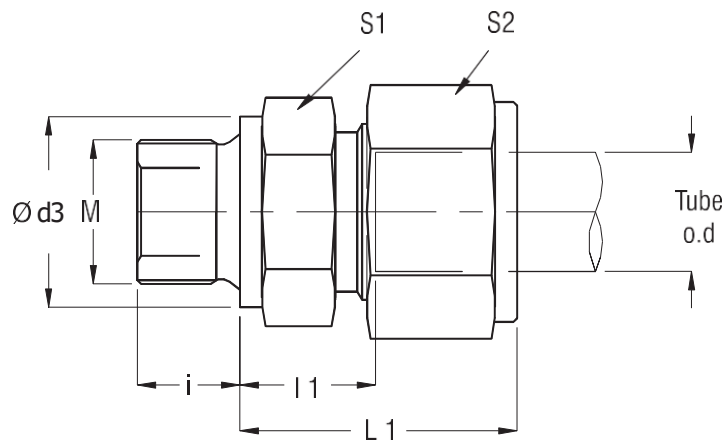
Series	TUBE o.d	G - Male BSP Threads	Ød3	i	l1	L 1*	S1	S2	Part No.	
Light L	6	G 1/8 A	14	8	8.5	24.0	14	14	MSC6LG01ES	
	250 bar	8	G 1/4 A	19	12	10.0	19	17	MSC8LG02ES	
		10	G 1/4 A	19	12	11.0	26.5	19	19	MSC10LG02ES
	160 bar	12	G 3/8 A	22	12	12.5	27.5	22	22	MSC12LG03ES
		15	G 1/2 A	27	14	14.0	30.0	27	27	MSC15LG04ES
18		G 1/2 A	27	14	14.5	31.5	27	32	MSC18LG04ES	
100 bar	22	G 3/4 A	32	16	16.5	33.5	32	36	MSC22LG06ES	
	28	G 1 A	40	18	17.5	35.5	41	41	MSC28LG08ES	
	35	G1. 1/4 A	50	20	17.5	40.5	50	50	MSC35LG10ES	
	42	G1. 1/2 A	55	22	19.0	42.5	55	60	MSC42LG12ES	
Heavy S	6	G 1/4 A	19	12	13.0	28.5	19	17	MSC6SG02ES	
	630 bar	8	G 1/4 A	19	12	15.0	30.0	19	19	MSC8SG02ES
		10	G 3/8 A	22	12	15.0	32.0	22	22	MSC10SG03ES
		12	G 3/8 A	22	12	17.0	33.5	22	24	MSC12SG03ES
	400 bar	16	G 1/2 A	27	14	18.5	37.5	27	30	MSC16SG04ES
		20	G 3/4 A	32	16	20.5	43.0	32	36	MSC20SG06ES
		25	G 1 A	40	18	23.0	48.0	41	46	MSC25SG08ES
250 bar	30	G1 1/4 A	50	20	23.5	51.5	50	50	MSC30SG10ES	
	38	G1 1/2 A	55	22	26.0	57.5	55	60	MSC38SG12ES	

* Dimensions given are approx. figures with tightened Nut.



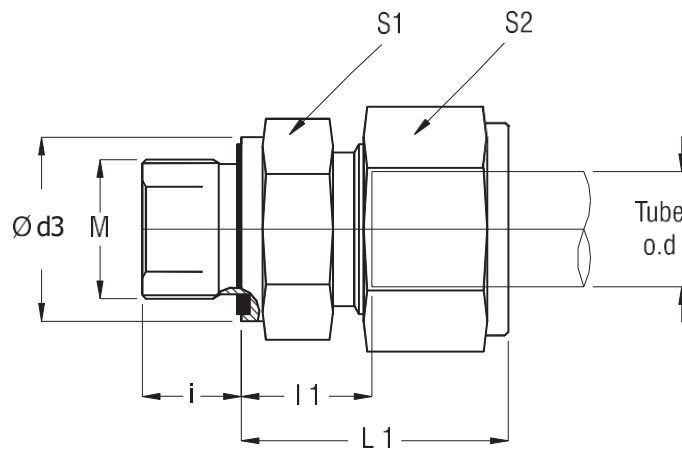
Series	TUBE o.d	M - Male Metric Threads	$\varnothing d3$	i	l1	L 1*	S1	S2	Part No.	
Light L	6	M10 x 1.0	14	8	8.5	24.0	14	14	MSC6LM10	
	315 bar	8	M12 x 1.5	17	12	10.0	25.0	17	17	MSC8LM12
		8	M18 x 1.5	23	12	11.5	26.5	24	17	MSC8LM18
		10	M14 x 1.5	19	12	11.0	26.5	19	19	MSC10LM14
		10	M16 x 1.5	21	12	12.0	27.5	22	19	MSC10LM16
		10	M18 x 1.5	23	12	12.5	28.0	24	19	MSC10LM18
		10	M22 x 1.5	27	14	14.0	29.5	27	19	MSC10LM22
		12	M14 x 1.5	19	12	11.0	26.0	19	22	MSC12LM14
		12	M16 x 1.5	21	12	12.5	27.5	22	22	MSC12LM16
		12	M18 x 1.5	23	12	12.5	27.5	24	22	MSC12LM18
		12	M22 x 1.5	27	14	14.0	29.0	27	22	MSC12LM22
		15	M16 x 1.5	21	12	13.0	29.0	24	27	MSC15LM16
		15	M18 x 1.5	23	12	13.5	29.5	24	27	MSC15LM18
		15	M22 x 1.5	27	14	15.0	31.0	27	27	MSC15LM22
160 bar	18	M18 x 1.5	23	12	14.0	31.0	27	32	MSC18LM18	
	18	M22 x 1.5	27	14	14.5	31.5	27	32	MSC18LM22	
	22	M22 x 1.5	27	14	16.5	33.5	32	36	MSC22LM22	
	22	M26 x 1.5	31	16	16.5	33.5	32	36	MSC22LM26	
	28	M33 x 2.0	39	18	17.5	35.5	41	41	MSC28LM33	
	35	M42 x 2.0	49	20	17.5	40.5	50	50	MSC35LM42	
	42	M48 x 2.0	55	22	19.0	42.5	55	60	MSC42LM48	

* Dimensions given are approx. figures with tightened Nut.



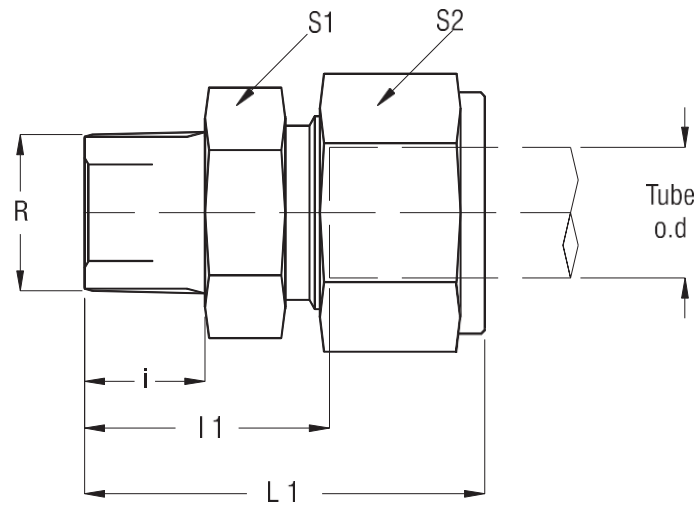
Series	TUBE o.d	M - Male Metric Threads	Ø d3	i	l 1	L 1*	S1	S2	Part No.	
Light L	6	M12 x 1.5	17	12	13.0	28.5	17	17	MSC6SM12	
	630 bar	8	M14 x 1.5	19	12	15.0	30.0	19	19	MSC8SM14
		10	M16 x 1.5	21	12	15.0	32.0	22	22	MSC10SM16
400 bar	12	M18 x 1.5	23	12	17.0	33.5	24	24	MSC12SM18	
	12	M22 x 1.5	27	14	17.5	34.0	27	24	MSC12SM22	
	16	M18 x 1.5	23	12	18.0	37.0	27	30	MSC16SM18	
		M22 x 1.5	27	14	18.5	37.5	27	30	MSC16SM22	
	20	M27 x 2.0	32	16	20.5	43.0	32	36	MSC20SM27	
250 bar	25	M33 x 2.0	39	18	23.0	48.0	41	46	MSC25SM33	
	30	M42 x 2.0	49	20	23.5	51.5	50	50	MSC30SM42	
	38	M48 x 2.0	55	22	26.0	57.5	55	60	MSC38SM48	

* Dimensions given are approx. figures with tightened Nut.



Series	TUBE o.d	G - Male BSP Threads	$\varnothing d3$	i	L 1	L 1*	S1	S2	Part No.
Light L 250 bar	6	M10 x 1.0	14	8	8.5	24.0	14	14	MSC6LM10ES
	8	M12 x 1.5	17	12	10.0	25.0	17	17	MSC8LM12ES
	10	M14 x 1.5	19	12	11.0	26.5	19	19	MSC10LM14ES
	12	M16 x 1.5	22	12	12.5	27.5	22	22	MSC12LM16ES
	15	M18 x 1.5	24	12	13.5	29.5	24	27	MSC15LM18ES
160 bar	18	M22 x 1.5	27	14	14.5	31.5	27	32	MSC18LM22ES
	22	M26 x 1.5	32	16	16.5	33.5	32	36	MSC22LM26ES
	28	M33 x 2.0	40	18	17.5	35.5	41	41	MSC28LM33ES
100 bar	35	M42 x 2.0	50	20	17.5	40.5	50	50	MSC35LM42ES
	42	M48 x 2.0	55	22	19.0	42.5	55	60	MSC42LM48ES
	Heavy S 630 bar	6	M12 x 1.5	17	12	13.0	28.5	17	17
8		M14 x 1.5	19	12	15.0	30.0	19	19	MSC8SM14ES
10		M16 x 1.5	22	12	15.0	32.0	22	22	MSC10SM16ES
12		M18 x 1.5	24	12	17.0	33.5	24	24	MSC12SM18ES
400 bar	16	M22 x 1.5	27	14	18.5	37.5	27	30	MSC16SM22ES
	20	M27 x 2.0	32	16	20.5	43.0	32	36	MSC20SM27ES
	25	M33 x 2.0	40	18	23.0	48.0	41	46	MSC25SM33ES
250 bar	30	M42 x 2.0	50	20	23.5	51.5	50	50	MSC30SM42ES
	38	M48 x 2.0	55	22	26.0	57.5	55	60	MSC38SM48ES

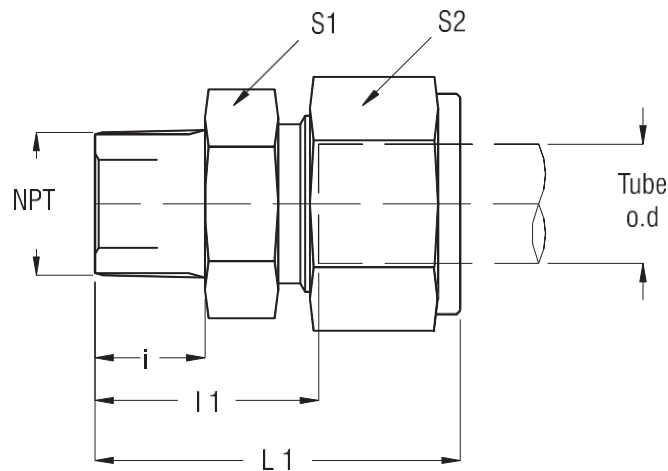
* Dimensions given are approx. figures with tightened Nut.



Series	TUBE o.d	R - Male BSPT Threads	i	l1	L1*	S1	S2	Part No.	
Light L	6	R 1/8	7.5	14.5	30.0	14	14	MSC6LR01	
	250 bar	6	R 1/4	11.0	18.0	33.5	14	14	MSC6LR02
		8	R 1/4	11.0	19.0	34.0	17	17	MSC8LR02
		10	R 1/4	11.0	20.0	35.5	17	19	MSC10LR02
		12	R 1/4	11.0	20.0	35.0	19	22	MSC12LR02
		12	R 3/8	11.5	20.5	35.5	19	22	MSC12LR03
		12	R 1/2	15.0	25.0	40.0	22	22	MSC12LR04
		15	R 1/2	15.0	26.0	42.0	24	27	MSC15LR04
	160 bar	18	R 1/2	15.0	26.5	43.5	27	32	MSC18LR04
		22	R 3/4	16.5	30.0	47.0	32	36	MSC22LR06
28		R1	19.0	33.5	51.5	41	41	MSC28LR08	
35		R1.1/4	21.5	35.0	58.0	46	50	MSC35LG10	
42		R1.1/2	21.5	37.5	61.0	55	60	MSC42LG12	
Heavy S	6	R 1/4	11.0	22.0	37.5	17	17	MSC6SR02	
	630 bar	8	R 1/4	11.0	22.0	37.0	17	19	MSC8SR02
		10	R 1/4	11.0	23.5	40.5	19	22	MSC10SR02
		10	R 3/8	11.5	24.0	41.0	19	22	MSC10SR03
		12	R 1/4	11.0	25.5	42.0	22	24	MSC12SR02
		12	R 3/8	11.5	26.0	42.5	22	24	MSC12SR03
		12	R 1/2	15.0	29.5	46.0	22	24	MSC12SR04
	400 bar	16	R 1/2	15.0	30.5	49.5	27	30	MSC16SR04
20		R 3/4	16.5	34.0	56.5	32	36	MSC20SR06	
250 bar	25	R1	19.0	39.0	64.0	41	46	MSC25SR08	
	30	R1.1/4	21.5	42.0	70.0	46	50	MSC30SR10	
	38	R1.1/2	21.5	44.5	76.0	55	60	MSC38SR12	

* Dimensions given are approx. figures with tightened Nut.

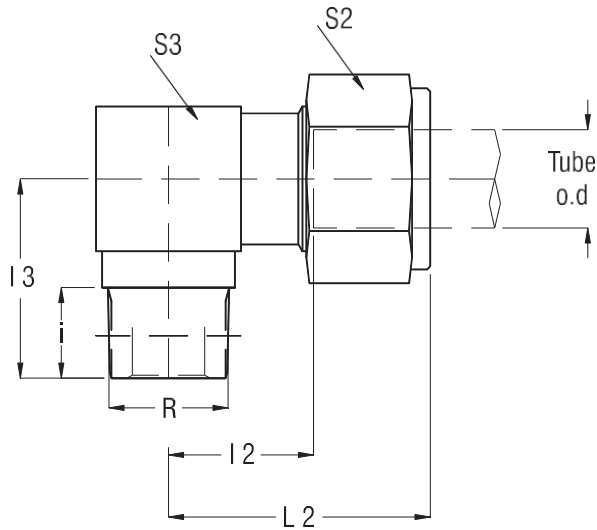
All Dimensions are in mm.



Series	TUBE o.d	Male NPT Threads	i	l 1	L 1*	S1	S2	Part No.
Light L	6	NPT 1/8-27	7.5	14.5	30.0	14	14	MSC6LN01
	250 bar	6	NPT 1/4-18	11.0	18.0	33.5	14	MSC6LN02
		8	NPT 1/4-18	11.0	19.0	34.0	17	MSC8LN02
		10	NPT 1/4-18	11.0	20.0	35.5	17	MSC10LN02
		12	NPT 1/4-18	11.0	20.0	35.0	19	MSC12LN02
		12	NPT 3/8-18	11.5	20.5	35.5	19	MSC12LN03
		12	NPT 1/2-14	15.0	25.0	40.0	22	MSC12LN04
		15	NPT 1/2-14	15.0	26.0	42.0	24	MSC15LN04
	160 bar	18	NPT 1/2-14	15.0	26.5	43.5	27	MSC18LN04
		22	NPT 3/4-14	16.5	30.0	47.0	32	MSC22LN06
	28	NPT 1- 11 1/2	19.0	33.5	51.5	41	MSC28LN08	
	35	NPT 1.1/4-11 1/2	21.5	35.0	58.0	46	MSC35LN10	
	42	NPT 1.1/2-11 1/2	21.5	37.5	61.0	55	MSC42LN12	
Heavy S	6	NPT 1/4-18	11.0	22.0	37.5	17	17	MSC6SN02
	630 bar	8	NPT 1/4-18	11.0	22.0	37.0	17	MSC8SN02
		10	NPT 1/4-18	11.0	23.5	40.5	19	MSC10SN02
		10	NPT 3/8-18	11.5	24.0	41.0	19	MSC10SN03
		12	NPT 1/4-18	11.0	25.5	42.0	22	MSC12SN02
		12	NPT 3/8-18	11.5	26.0	42.5	22	MSC12SN03
		12	NPT 1/2-14	15.0	29.5	46.0	22	MSC12SN04
	400 bar	16	NPT 1/2-14	15.0	30.5	49.5	27	MSC16SN04
		20	NPT 3/4-14	16.5	34.0	56.5	32	MSC20SN06
	250 bar	25	NPT 1-11 1/2	19.0	39.0	64.0	41	MSC25SN08
	30	NPT 1.1/4-11 1/2	21.5	42.0	70.0	46	MSC30SN10	
	38	NPT 1.1/2-11 1/2	21.5	44.5	76.0	55	MSC38SN12	

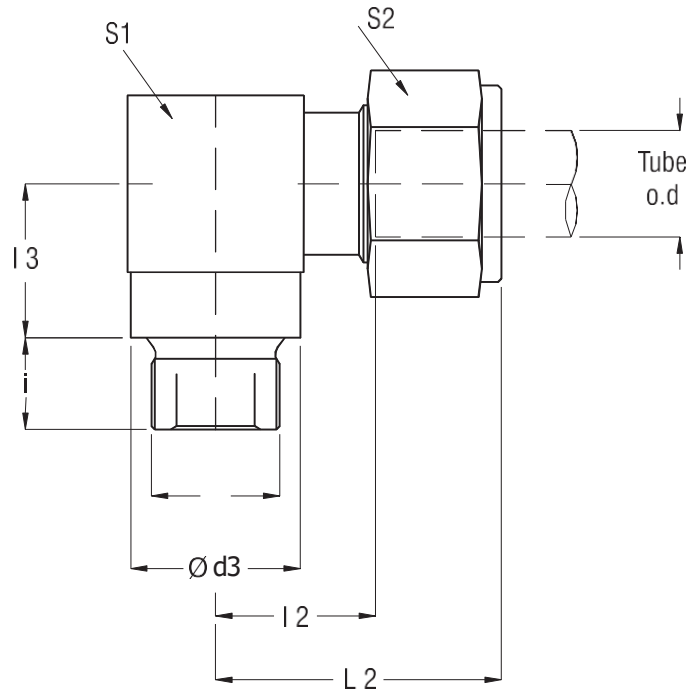
* Dimensions given are approx. figures with tightened Nut.

All Dimensions are in mm.



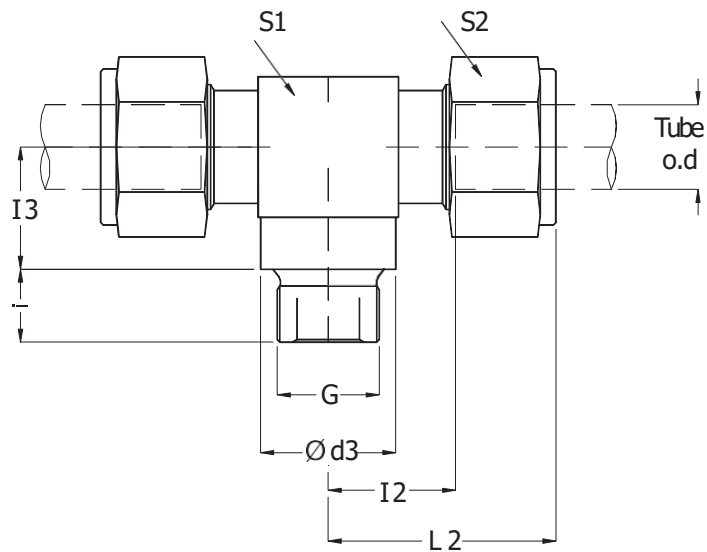
Series	TUBE o.d	R - Male BSPT Threads	i	I 3	I 2*	L 2*	S 2	S 3	Part No.
250 bar	6	R 1/8	7.5	21.0	13.0	28.5	14	12	MSE6LR01
Light L	8	R 1/4	11.0	27.5	15.5	30.5	17	14	MSE8LR02
	10	R 1/4	11.0	27.0	15.0	30.5	19	17	MSE10LR02
	12	R 3/8	11.5	28.0	17.0	32.0	22	19	MSE12LR03
	15	R 1/2	15.0	35.0	22.0	38.0	27	22	MSE15LR04
160bar	18	R 1/2	15.0	36.0	23.5	40.5	32	27	MSE18LR06
Heavy S	6	R 1/4	11.0	26.0	17.5	33.0	17	14	MSE6SR02
	8	R 1/4	11.0	27.0	17.0	32.0	19	17	MSE8SR02
	10	R 3/8	11.5	28.0	17.5	34.5	22	19	MSE10SR02
	12	R 3/8	11.5	28.0	21.5	38.0	24	22	MSE12SR03
400 bar	16	R 1/2	15.0	33.5	26.0	45.0	30	24	MSE16SR03

* Dimensions given are approx. figures with tightened Nut.



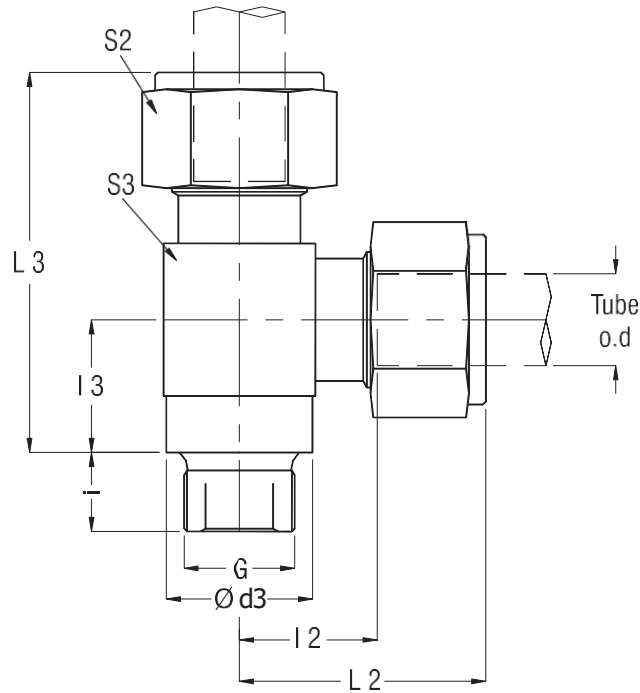
Series	TUBE o.d	G - Male BSP Threads	Ø d3	i	l 2	l 3	L 2*	S2	S3	Part No.
160 bar	22	G 3/4 A	32	16	27.5	26	44.5	36	32	MSE22LG06
Light L	28	G 1 A	39	18	30.5	30	48.5	41	41	MSE28LG08
	35	G1 1/4 A	49	20	34.5	34	57.5	50	50	MSE35LG10
100 bar	42	G1 1/2 A	55	22	40.0	39	63.5	60	55	MSE42LG12
Heavy S	20	G 3/4 A	32	16	26.5	26	49.0	36	32	MSE20SG06
400 bar	25	G 1 A	39	18	30.0	30	55.0	46	41	MSE25SG08
	30	G1 1/4 A	49	20	35.5	34	63.5	50	50	MSE30SG10
250 bar	38	G1 1/2 A	55	22	41.0	39	72.5	60	55	MSE38SG12

* Dimensions given are approx. figures with tightened Nut.



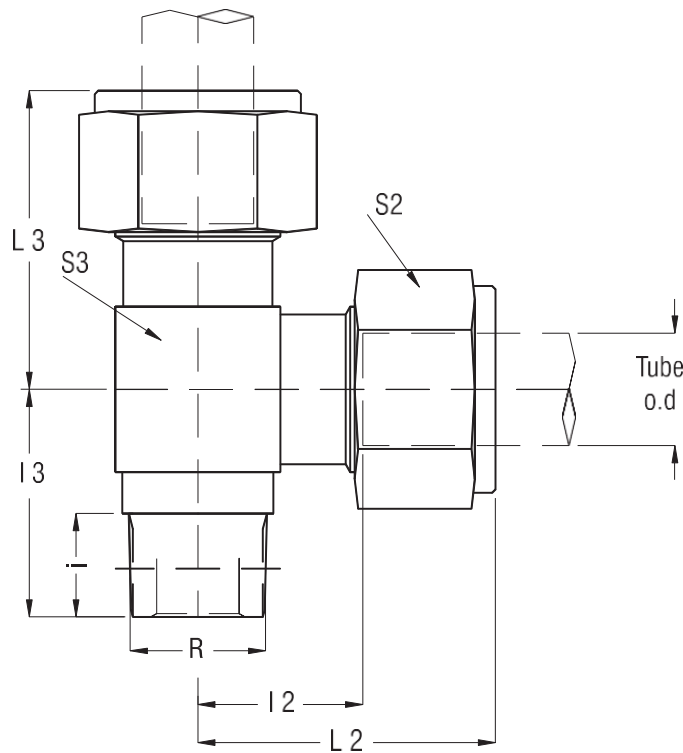
Series	TUBE o.d	G - Male BSP Threads	Ø d3	i	I 2	I 3	L 2*	S2	S3	Part No.
160 bar	22	G 3/4 A	32	16	27.5	26	44.5	36	32	MSBT22LG06
Light L	28	G 1 A	39	18	30.5	30	48.5	41	41	MSBT28LG08
	35	G1 1/4 A	49	20	34.5	34	57.5	50	50	MSBT35LG10
100 bar	42	G1 1/2 A	55	22	40.0	39	63.5	60	55	MSBT42LG12
Heavy S	20	G 3/4 A	32	16	26.5	26	49.0	36	32	MSBT20SG06
400 bar	25	G 1 A	39	18	30.0	30	55.0	46	41	MSBT25SG08
	30	G1 1/4 A	49	20	35.5	34	63.5	50	50	MSBT30SG10
250 bar	38	G1 1/2 A	55	22	41.0	39	72.5	60	55	MSBT38SG12

* Dimensions given are approx. figures with tightened Nut.



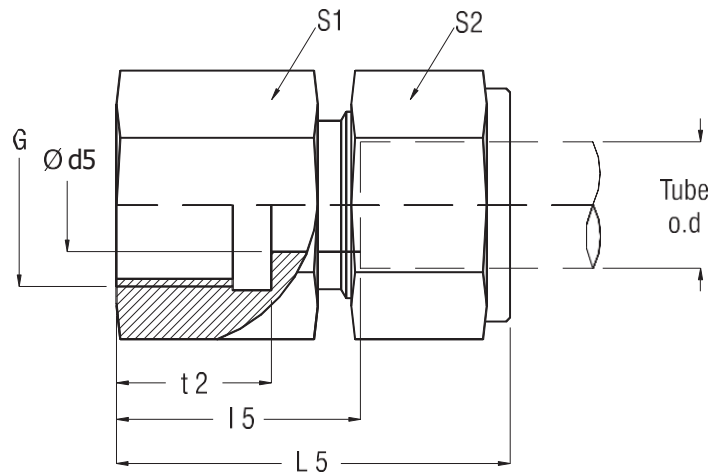
Series	TUBE o.d	G - Male BSP Threads	Ø d3	i	I 2	I 3	L 2*	L 3*	S2	S3	Part No.
160 bar	22	G 3/4 A	32	16	27.5	26	44.5	70.5	36	32	MSRT22LG06
Light L	28	G 1 A	39	18	30.5	30	48.5	78.5	41	41	MSRT28LG08
	35	G1 1/4 A	49	20	34.5	34	57.5	91.5	50	50	MSRT35LG10
100 bar	42	G1 1/2 A	55	22	40.0	39	63.5	102.5	60	55	MSRT42LG12
Heavy S	20	G 3/4 A	32	16	26.5	26	49.0	75.0	36	32	MSRT20SG06
400 bar	25	G 1 A	39	18	30.0	30	55.0	85.0	46	41	MSRT25SG08
	30	G1 1/4 A	49	20	35.5	34	63.5	97.5	50	50	MSRT30SG10
250 bar	38	G1 1/2 A	55	22	41.0	39	72.5	111.5	60	55	MSRT38SG12

* Dimensions given are approx. figures with tightened Nut.



Series	TUBE o.d	R - Male BSPT Threads	i	I 2	I 3	L 2*	S 2	S 3	Part No.
250 bar	6	R 1/8	7.5	13.0	21.0	28.5	14	12	MSRT6LR01
Light L	8	R 1/4	11.0	15.5	27.5	30.5	17	14	MSRT8LR02
	10	R 1/4	11.0	15.0	27.0	30.5	19	17	MSRT10LR02
	12	R 3/8	11.5	17.0	28.0	32.0	22	19	MSRT12LR03
	15	R 1/2	15.0	22.0	35.0	38.0	27	22	MSRT15LR04
160bar	18	R 1/2	15.0	23.5	36.0	40.5	32	27	MSRT18LR04
Heavy S	6	R 1/4	11.0	17.5	26.5	33.0	17	14	MSRT6SR02
	8	R 1/4	11.0	17.0	27.0	32.0	19	17	MSRT8SR02
	10	R 3/8	11.5	17.5	28.0	34.5	22	19	MSRT10SR03
	12	R 3/8	11.5	21.5	28.0	38.0	24	22	MSRT12SR03
400 bar	16	R 1/2	15.0	26.0	33.5	45.0	30	24	MSRT16SR04

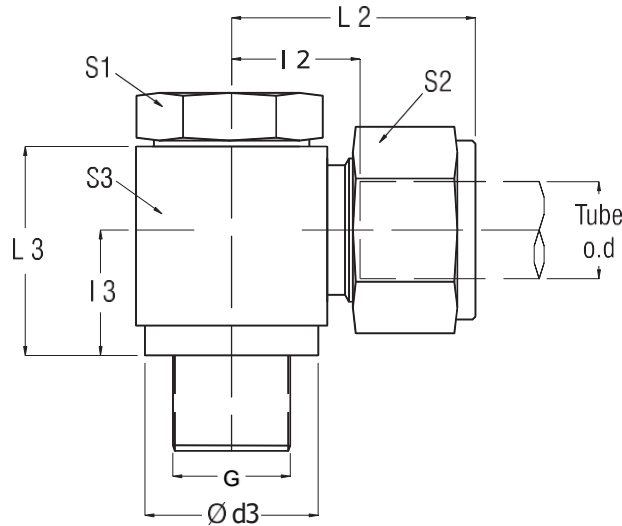
* Dimensions given are approx. figures with tightened Nut.



Series	TUBE o.d	G	Ø d5	t 2	15	L 5*	S 1	S 2	Part No.
Light L	6	G 1/8	4	12.0	19.0	34.5	14	14	FSC6LG01
	250 bar	8	G 1/4	6	17.0	24.0	19	17	FSC8LG02
160bar	10	G 1/4	8	17.0	25.0	40.5	19	19	FSC10LG02
	12	G 3/8	10	17.0	26.0	41.5	24	22	FSC12LG03
	15	G 1/2	12	20.0	31.0	47.0	27	27	FSC15LG04
	18	G 1/2	15	20.0	30.5	47.5	27	32	FSC18LG04
	22	G 3/4	19	22.0	35.5	52.5	36	36	FSC22LG06
100 bar	28	G 1	24	24.5	38.0	56.0	41	41	FSC28LG08
	35	G1.1/4	30	26.5	41.0	64.0	55	50	FSC35LG10
	42	G1.1/2	36	28.5	42.5	66.0	60	60	FSC42LG12
Heavy S	6	G 1/4	4	17.0	26.0	41.5	19	17	FSC6SG02
	630 bar	8	G 1/4	5	17.0	41.0	19	19	FSC8SG02
	10	G 3/8	7	17.0	26.5	43.5	24	22	FSC10SG03
	12	G 3/8	8	17.0	26.5	43.0	24	24	FSC12SG03
	14	G 1/2	10	20.0	32.0	50.5	30	27	FSC14SG04
400 bar	16	G 1/2	12	20.0	31.5	50.5	30	30	FSC16SG04
	20	G 3/4	16	22.0	34.5	57.5	36	36	FSC20SG06
	25	G 1	20	24.5	37.5	62.5	41	46	FSC25SG08
250 bar	30	G 1.1/4	25	26.5	42.0	70.0	55	50	FSC30SG10
	38	G 1.1/2	32	28.5	43.5	75.0	60	60	FSC38SG12

* Dimensions given are approx. figures with tightened Nut.

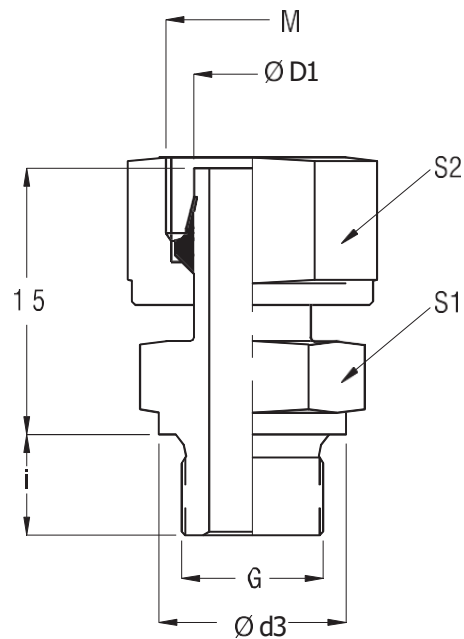
All Dimensions are in mm.



Series	TUBE o.d	G	Ød3	i	I 2	I 3	L 2*	L 3	S 1	S 2	S 3	Part No.
Light L 250 bar	6	G 1/8	15	8	12.5	12.0	28	28	19	14	19	BC6LG01
	8	G 1/4	22	12	14.0	15.5	29	34	19	17	22	B08LG02
	10	G 1/4	22	12	15.5	18.0	31	34	19	19	22	BC10LG02
	12	G 3/8	24	12	17.5	18.0	33	39	22	22	27	BC12LG03
160bar	15	G 1/2	29	14	20.0	20.0	35	46	27	27	30	BC15LG04
	18	G 1/2	29	14	19.5	20.0	36	46	27	32	30	BC18LG04
	22	G 3/4	35	16	27.0	25.5	44	60	32	36	41	BC22LG06
100 bar	28	G 1	43	18	29.5	29.0	46	67	41	41	46	BC28LG08
	35	G1.1/4	53	20	33.0	34.0	55	78	50	50	55	BC35LG10
	42	G1.1/2	59	22	40.0	41.5	63	88	55	60	70	BC42LG12
Heavy S 630 bar	6	G 1/4	22	12	16.0	15.5	31	34	19	17	22	BC6SG02
	8	G 1/4	22	12	16.0	15.5	31	34	19	19	22	BC8SG02
	10	G 3/8	24	12	18.0	18.0	35	39	22	22	27	BC10SG03
	12	G 3/8	24	12	18.0	18.0	35	39	22	24	27	BC12SG03
	14	G 1/2	29	14	22.0	21.0	40	46	27	27	32	BC14SG04
400 bar	16	G 1/2	29	14	21.5	21.0	40	46	27	30	32	BC16SG04
	20	G 3/4	35	16	28.5	28.0	50	60	32	36	41	BC20SG06
	25	G 1	43	18	31.0	31.0	55	67	41	46	50	BC25SG08
250 bar	30	G 1.1/4	53	20	36.5	36.5	63	78	55	50	60	BC30SG10
	38	G 1.1/2	59	22	41.0	41.5	72	88	60	60	70	BC38SG12

* Dimensions given are approx. figures with tightened Nut.

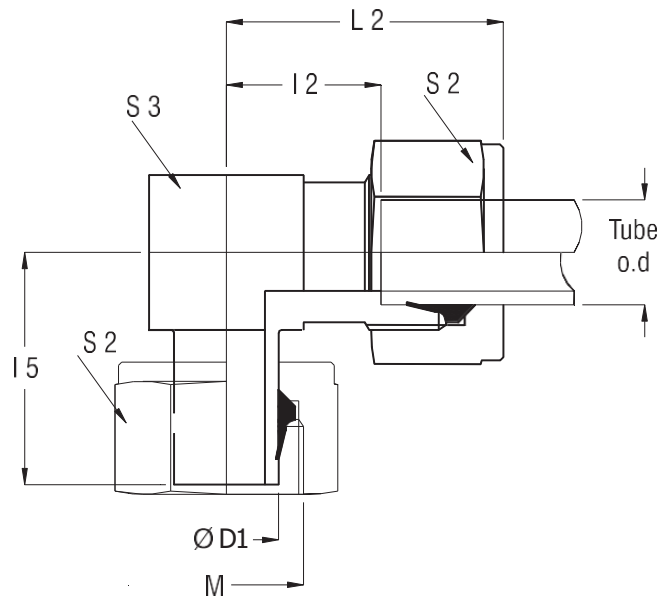
All Dimensions are in mm.



Series	TUBE od Ø D1	G -Male BSP thread	M	Ø d3	i	15	S 1	S 2	Part No.	
Light L	6	G 1/8 A	M12 x 1.5	14	8	24.5	14	14	EVG6LG01	
	250 bar	8	G 1/4 A	M14 x 1.5	18	12	19	17	EVG8LG02	
160bar	10	G 1/4 A	M16 x 1.5	18	12	27.5	19	19	EVG10LG02	
	12	G 3/8 A	M18 x 1.5	22	12	34.0	24	22	EVG12LG03	
	15	G 1/2 A	M22 x 1.5	26	14	32.0	27	27	EVG15LG04	
	18	G 1/2 A	M26 x 1.5	26	14	31.5	27	32	EVG18LG04	
	22	G 3/4 A	M30 x 2.0	32	16	32.5	32	36	EVG22LG06	
100 bar	28	G 1 A	M36 x 2.0	39	18	35.0	41	41	EVG28LG08	
	35	G1.1/4 A	M45 x 2.0	49	20	42.5	50	50	EVG35LG10	
	42	G1.1/2 A	M52 x 2.0	55	22	46.5	55	60	EVG42LG12	
Heavy S	630 bar	6	G 1/4 A	M14 x 1.5	18	12	27.0	19	17	EVG6SG02
	8	G 1/4 A	M16 x 1.5	18	12	29.5	19	19	EVG8SG02	
	10	G 3/8 A	M18 x 1.5	22	12	32.0	22	22	EVG10SG03	
	12	G 3/8 A	M20 x 1.5	22	12	34.0	22	24	EVG12SG03	
	14	G 1/2 A	M22 x 1.5	26	14	36.5	27	27	EVG14SG04	
400 bar	16	G 1/2 A	M24 x 1.5	26	14	37.0	27	30	EVG16SG04	
	20	G 3/4 A	M30 x 2.0	26	16	43.0	32	36	EVG20SG06	
	25	G 1 A	M36 x 2.0	32	18	48.0	41	46	EVG25SG08	
250 bar	30	G 1.1/4 A	M42 x 2.0	39	20	51.0	50	50	EVG30SG10	
	38	G 1.1/2 A	M52 x 2.0	55	22	60.0	60	60	EVG38SG12	

* Dimensions given are approx. figures with tightened Nut.

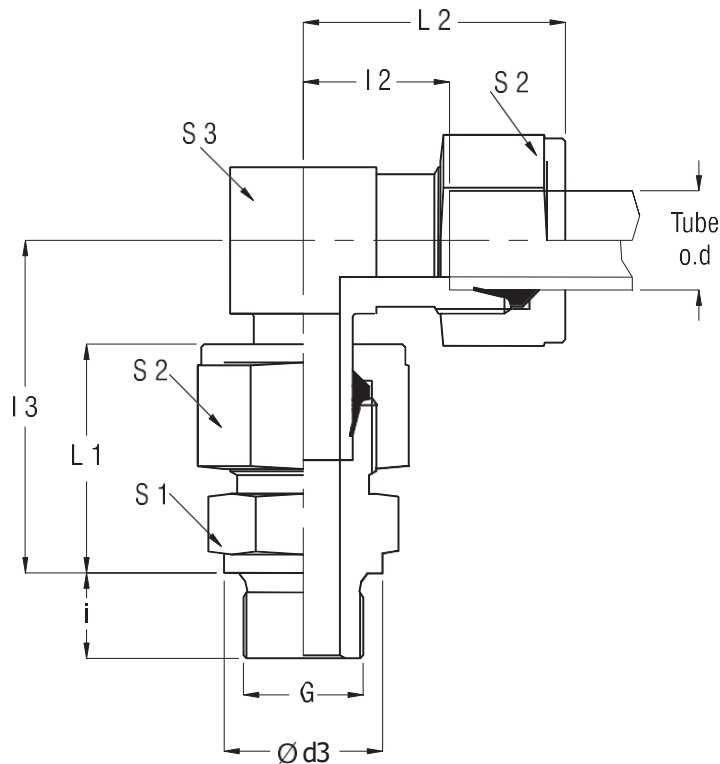
All Dimensions are in mm.



Series	TUBE od ØD1	M	I 2	I 5	*L 2	S 2	S 3	Part No.
Light L	6	M12 x 1.5	12.0	26.0	27.5	14	12	SE6L
	250 bar	8	M14 x 1.5	14.0	27.5	17	14	SE8L
160bar	10	M16 x 1.5	15.0	29.0	30.5	19	17	SE10L
	12	M18 x 1.5	17.0	29.0	32.0	22	19	SE12L
	15	M22 x 1.5	21.0	32.5	37.0	27	22	SE15L
	18	M26 x 1.5	23.5	35.5	40.5	32	27	SE18L
	22	M30 x 2.0	27.5	38.5	44.5	36	30	SE22L
100 bar	28	M36 x 2.0	30.5	41.5	48.5	41	36	SE28L
	35	M45 x 2.0	34.5	51.0	57.5	50	46	SE35L
	42	M52 x 2.0	40.0	56.0	63.5	60	55	SE42L
Heavy S	6	M14 x 1.5	16.0	27.0	31.5	17	14	SE6S
	630 bar	8	M16 x 1.5	17.0	27.5	19	17	SE8S
	10	M18 x 1.5	17.5	30.0	34.5	22	19	SE10S
	12	M20 x 1.5	21.5	31.0	38.0	24	22	SE12S
	16	M22 x 1.5	24.5	36.5	43.5	30	24	SE16S
400 bar	20	M30 x 2.0	26.5	44.5	49.0	36	30	SE20S
	25	M36 x 2.0	30.0	50.0	55.0	46	36	SE25S
	30	M42 x 2.0	35.5	55.0	63.5	50	46	SE30S
250 bar	38	M52 x 2.0	41.0	63.0	72.0	60	55	SE38S

* Dimensions given are approx. figures with tightened Nut.

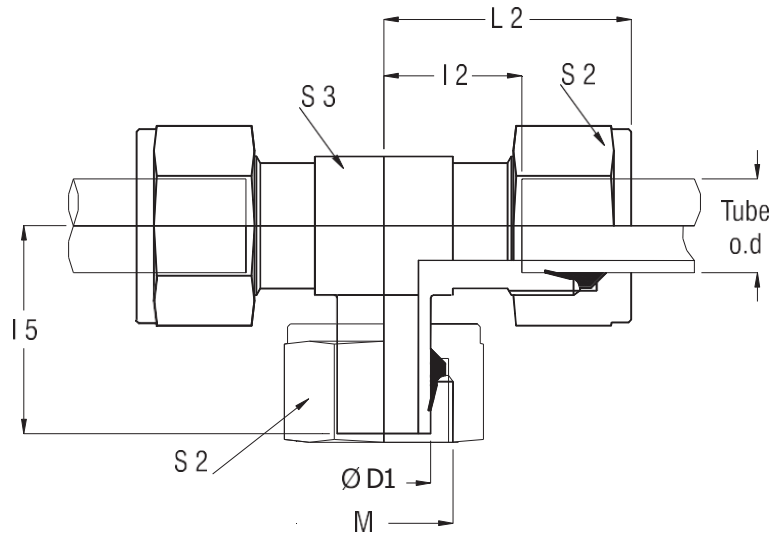
All Dimensions are in mm.



Series	TUBE o.d	G -Male BSP thread	Ød3	i	I 2	I 3	L 1*	L 2*	S 1	S 2	S 3	Part No.
Light L	6	G 1/8	14	8	12.0	34.5	24.0	27.5	14	14	12	SEC6LG01
	250 bar	8	G 1/4	18	14.0	37.5	25.0	29.0	19	17	14	SEC8LG02
		10	G 1/4	18	15.0	40.0	26.5	30.5	19	19	17	SEC10LG02
		12	G 3/8	22	17.0	43.0	27.5	32.0	22	22	19	SEC12LG03
		15	G 1/2	26	21.0	47.5	30.0	37.0	27	27	22	SEC15LG04
160bar	18	G 1/2	26	14	23.5	50.5	31.5	40.5	27	32	27	SEC18LG04
	22	G 3/4	32	16	27.5	55.5	33.5	44.5	32	36	30	SEC22LG06
100 bar	28	G 1	39	18	30.5	61.0	35.5	48.5	41	41	36	SEC28LG08
	35	G1.1/4	49	20	34.5	72.0	40.5	57.5	50	50	46	SEC35LG10
	42	G1.1/2	55	22	40.0	79.0	42.5	63.5	55	60	55	SEC42LG12
Heavy S	6	G 1/4	18	12	16.0	40.0	28.5	31.5	19	17	14	SEC6SG02
	630 bar	8	G 1/4	18	17.0	44.0	30.0	32.0	19	19	17	SEC8SG02
		10	G 3/8	22	17.5	47.0	32.0	34.5	22	22	19	SEC10SG03
		12	G 3/8	22	21.5	50.0	33.5	38.0	22	24	22	SEC12SG03
		14	G 1/2	26	22.0	55.0	37.5	40.5	27	27	22	SEC14SG04
400 bar	16	G 1/2	26	14	24.5	56.0	37.5	43.5	27	30	24	SEC16SG04
	20	G 3/4	32	16	26.5	65.0	43.0	49.0	32	36	30	SEC20SG06
	25	G 1	39	18	30.0	73.5	48.0	55.0	41	46	36	SEC25SG08
250 bar	30	G 1.1/4	49	20	35.5	80.0	51.5	63.5	50	50	46	SEC30SG10
	38	G 1.1/2	55	22	41.0	93.5	57.5	72.5	60	60	55	SEC38SG12

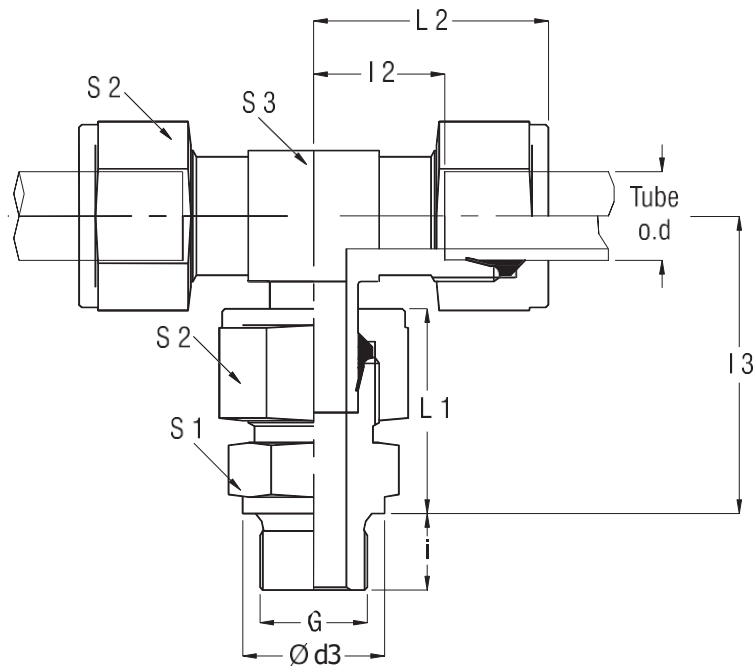
* Dimensions given are approx. figures with tightened Nut.

All Dimensions are in mm.



Series	TUBE od Ø D1	M	I 2	I 5	L 2*	S 2	S 3	Part No.	
Light L	6	M12 x 11.5	12.0	26.0	27.5	14	12	SBT6L	
	250 bar	8	M14 x 1.5	14.0	27.5	17	14	SBT8L	
		10	M16 x 1.5	15.0	29.0	19	17	SBT10L	
		12	M18 x 1.5	17.0	30.5	22	19	SBT12L	
		15	M22 x 1.5	21.0	33.5	27	22	SBT15L	
160 bar	18	M26 x 1.5	23.5	36.0	40.5	32	27	SBT18L	
		22	M30 x 2.0	27.5	39.0	36	30	SBT22L	
	100 bar	28	M36 x 2.0	30.5	43.5	48.5	41	36	SBT28L
			35	M45 x 2.0	34.5	54.5	50	46	SBT35L
			42	M52 x 2.0	40.0	60.0	63.5	60	SBT42L
Heavy S	6	M14 x 1.5	16.0	27.0	31.5	17	14	SBT6S	
	630 bar	8	M16 x 1.5	17.0	29.0	32.0	19	17	SBT8S
			10	M18 x 1.5	17.5	32.0	22	19	SBT10S
			12	M20 x 1.5	21.5	33.0	24	22	SBT12S
			14	M22 x 1.5	22.0	36.0	27	22	SBT14S
400 bar	16	M24 x 1.5	24.5	37.5	43.5	30	24	SBT16S	
		20	M30 x 2.0	26.5	44.5	36	30	SBT20S	
		25	M36 x 2.0	30.0	50.5	46	36	SBT25S	
250 bar	30	M42 x 2.0	35.5	56.5	63.5	50	46	SBT30S	
		38	M52 x 2.0	41.0	67.5	72.5	60	SBT38S	

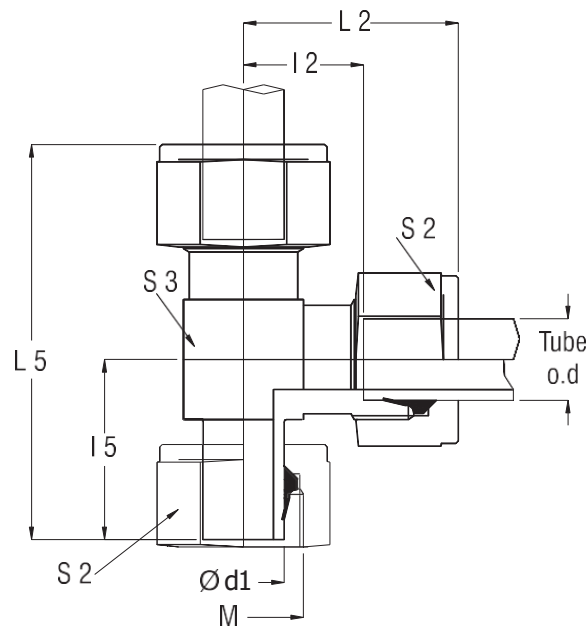
* Dimensions given are approx. figures with tightened Nut.



Series	TUBE o.d	G -Male BSP thread	Ød3	i	I 2	I 3	L 1*	L 2*	S 1	S 2	S 3	Part No.	
Light L	6	G 1/8	14	8	12.0	34.5	24.0	27.5	14	14	12	SBTC6LG01	
	250 bar	8	G 1/4	18	12	14.0	25.0	29.0	19	17	14	SBTC8LG02	
		10	G 1/4	18	12	15.0	40.0	26.5	30.5	19	19	17	SBTC10LG02
		12	G 3/8	22	12	17.0	43.0	27.5	32.0	22	22	19	SBTC12LG03
		15	G 1/2	26	14	21.0	47.5	30.0	37.0	27	27	22	SBTC15LG04
160bar	18	G 1/2	26	14	23.5	50.5	31.5	40.5	27	32	27	SBTC18LG04	
	22	G 3/4	32	16	27.5	55.5	33.5	44.5	32	36	30	SBTC22LG06	
100 bar	28	G 1	39	18	30.5	61.0	35.5	48.5	41	41	36	SBTC28LG08	
	35	G1.1/4	49	20	34.5	72.0	40.5	57.5	50	50	46	SBTC35LG10	
	42	G1.1/2	55	22	40.0	79.0	42.5	63.5	55	60	55	SBTC42LG12	
Heavy S	6	G 1/4	18	12	16.0	40.0	28.5	31.5	19	17	14	SBTC06HG02	
	630 bar	8	G 1/4	18	12	17.0	30.0	32.0	19	19	17	SBTC08HG02	
		10	G 3/8	22	12	17.5	32.0	34.5	22	22	19	SBTC10HG03	
		12	G 3/8	22	12	21.5	33.5	38.0	22	24	22	SBTC12HG03	
		14	G 1/2	26	14	22.0	37.5	40.5	27	27	22	SBTC14HG04	
400 bar	16	G 1/2	26	14	24.5	37.5	43.5	27	30	24	SBTC16HG04		
	20	G 3/4	32	16	26.5	43.0	49.0	32	36	30	SBTC20HG06		
	25	G 1	39	18	30.0	48.0	55.0	41	46	36	SBTC25HG08		
250 bar	30	G 1.1/4	49	20	35.5	51.5	63.5	50	50	46	SBTC30HG10		
	38	G 1.1/2	55	22	41.0	57.5	72.5	60	60	55	SBTC38HG12		

* Dimensions given are approx. figures with tightened Nut.

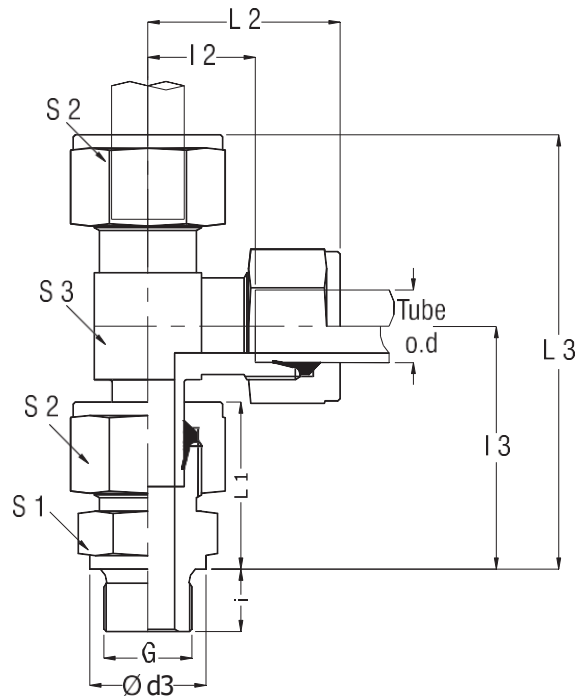
All Dimensions are in mm.



Series	TUBE o.d	M	I 2	I 5	L 2*	L 5*	S 2	S 3	Part No.	
Light L	6	M12 x 1.5	12.0	26.0	27.5	53.5	14	12	SRT6L	
	250 bar	8	M14 x 1.5	14.0	27.5	29.0	17	14	SRT8L	
		10	M16 x 1.5	15.0	29.0	30.5	19	17	SRT10L	
		12	M18 x 1.5	17.0	30.5	32.0	22	19	SRT12L	
		15	M22 x 1.5	21.0	33.5	37.0	27	22	SRT15L	
160bar	18	M26 x 1.5	23.5	36.0	40.5	76.5	32	27	SRT18L	
		22	M30 x 2.0	27.5	39.0	44.5	36	30	SRT22L	
	100 bar	28	M36 x 2.0	30.5	43.5	48.5	41	36	SRT28L	
		35	M45 x 2.0	34.5	54.5	57.5	50	46	SRT35L	
		42	M52 x 2.0	40.0	60.0	63.5	123.5	60	55	SRT42L
Heavy S	6	M14 x 1.5	16.0	27.0	31.5	58.5	17	14	SRT6S	
	630 bar	8	M16 x 1.5	17.0	29.0	32.0	19	17	SRT8S	
		10	M18 x 1.5	17.5	32.0	34.5	66.5	22	19	SRT10S
		12	M20 x 1.5	21.5	33.0	38.0	71.0	24	22	SRT12S
		14	M22 x 1.5	22.0	36.0	40.5	76.5	27	22	SRT14S
400 bar	16	M24 x 1.5	24.5	37.5	43.5	81.0	30	24	SRT16S	
		20	M30 x 2.0	26.5	44.5	49.0	93.5	36	30	SRT20S
		25	M36 x 2.0	30.0	50.5	55.0	105.5	46	36	SRT25S
250 bar	30	M42 x 2.0	35.5	56.5	63.5	120	50	46	SRT30S	
		38	M52 x 2.0	41.0	67.5	72.5	140	60	55	SRT38S

* Dimensions given are approx. figures with tightened Nut.

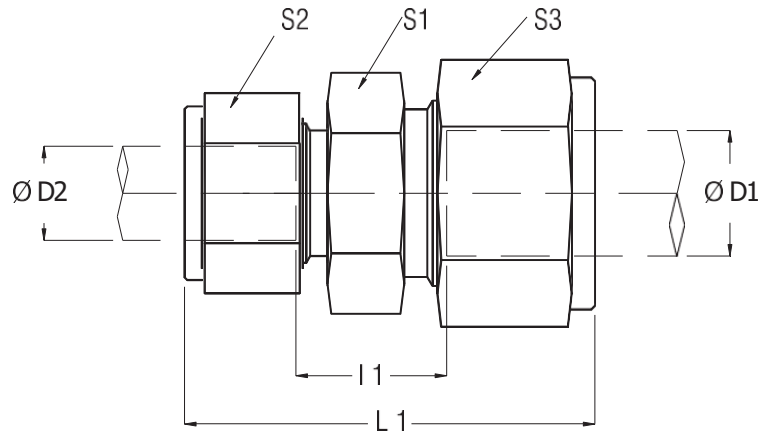
All Dimensions are in mm.



Series	TUBE o.d	G - Male BSP thread	$\text{Ø}d3$	i	I 2	I 3	L 1*	L 2*	L 3*	S 1	S 2	S 3	Part No.
Light L 250 bar	6	G 1/8	14	8	12.0	34.5	24.0	27.5	62.0	14	14	12	SRTC6LG01
	8	G 1/4	18	12	14.0	37.5	25.0	29.0	66.5	19	17	14	SRTC8LG02
	10	G 1/4	18	12	15.0	40.0	26.5	30.5	70.5	19	19	17	SRTC10LG02
	12	G 3/8	22	12	17.0	43.0	27.5	32.0	75.0	22	22	19	SRTC12LG03
	15	G 1/2	26	14	21.0	47.5	30.0	37.0	84.5	27	27	22	SRTC15LG04
160bar	18	G 1/2	26	14	23.5	50.5	31.5	40.5	91.0	27	32	27	SRTC18LG04
	22	G 3/4	32	16	27.5	55.5	33.5	44.5	100.0	32	36	30	SRTC22LG06
100 bar	28	G 1	39	18	30.5	61.0	35.5	48.5	109.5	41	41	36	SRTC28LG08
	35	G1.1/4	49	20	34.5	72.0	40.5	57.5	129.5	50	50	46	SRTC35LG10
	42	G1.1/2	55	22	40.0	79.0	42.5	63.5	142.5	55	60	55	SRTC42LG12
Heavy S 630 bar	6	G 1/4	18	12	16.0	40.0	28.5	31.5	71.5	19	17	14	SRTC6SG02
	8	G 1/4	18	12	17.0	44.0	30.0	32.0	76.0	19	19	17	SRTC8SG02
	10	G 3/8	22	12	17.5	47.0	32.0	34.5	81.5	22	22	19	SRTC10SG03
	12	G 3/8	22	12	21.5	50.0	33.5	38.0	88.0	22	24	22	SRTC12SG03
	14	G 1/2	26	14	22.0	55.0	37.5	40.5	95.5	27	27	22	SRTC14SG04
400 bar	16	G 1/2	26	14	24.5	56.0	37.5	43.5	99.5	27	30	24	SRTC16SG04
	20	G 3/4	32	16	26.5	65.0	43.0	49.0	114.5	32	36	30	SRTC20SG06
	25	G 1	39	18	30.0	73.5	48.0	55.0	128.5	41	46	36	SRTC25SG08
250 bar	30	G 1.1/4	49	20	35.5	80.0	51.5	63.5	143.5	50	50	46	SRTC30SG10
	38	G 1.1/2	55	22	41.0	93.5	57.5	72.5	166.0	55	60	55	SRTC38SG12

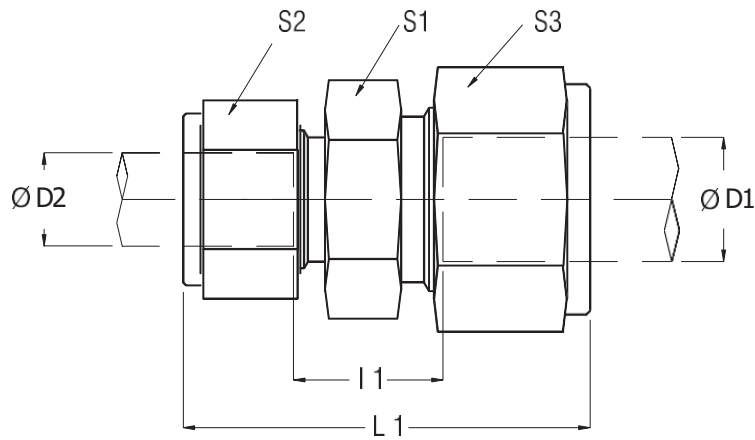
* Dimensions given are approx. figures with tightened Nut.

All Dimensions are in mm.



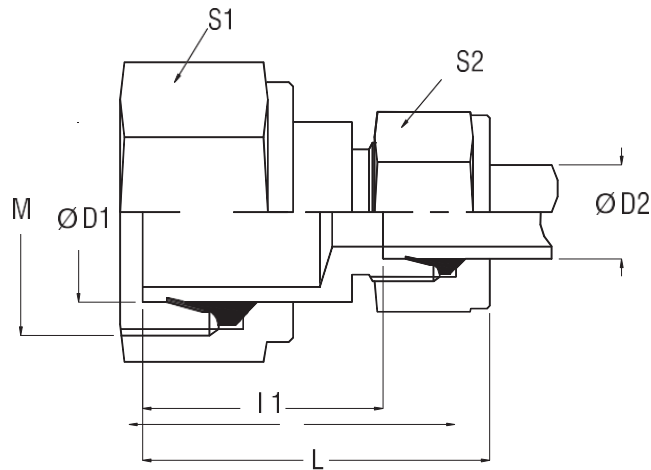
Pr. (bar)	Ø D1	Ø D2	I 1	L 1	S1	S2	S3	Part No.
Light L	6	4	10.5	32.0	12	10	12	SR6L4L
100 bar	8	4	12.5	34.0	12	10	14	SR8L4L
	8	6	11.0	34.0	12	12	14	SR8L6L
315 bar	8	6	11.0	41.5	14	14	17	SR8L6L
315 bar	10	6	12.0	43.0	17	17	19	SR10L6L
	10	8	12.0	42.5	17	17	19	SR10L8L
315 bar	12	6	13.0	43.5	19	19	22	SR12L6L
	12	8	13.0	43.0	19	19	22	SR12L8L
	12	10	14.0	44.5	19	19	22	SR12L10L
315 bar	15	10	15.0	46.5	24	24	27	SR15L10L
	15	12	15.0	46.0	24	24	27	SR15L12L
315 bar	18	10	15.5	48.0	27	27	32	SR18L10L
	18	12	15.5	47.5	27	27	32	SR18L12L
	18	15	16.5	49.5	27	27	32	SR18L15L
160 bar	22	12	17.5	49.5	32	32	36	SR22L18L
	22	15	18.5	51.5	32	32	36	SR22L15L
	22	18	18.0	52.0	32	32	36	SR22L18L
160 bar	28	18	19.0	54.0	41	36	41	SR28L18L
	28	22	21.0	56.0	41	36	41	SR28L22L
160 bar	35	22	21.0	61.0	46	36	50	SR35L22L
	35	28	21.0	62.0	46	41	50	SR35L28L

* Dimensions given are approx. figures with tightened Nut.



Pr. (bar)	Ø D1	Ø D2	l 1	L 1	S1	S2	S3	Part No.
630 bar	8	6	18.0	48.5	17	17	19	SR8S6S
630 bar	10	6	17.5	50.0	19	17	22	SR10S6S
	10	8	17.5	49.5	19	19	22	SR10S8S
630 bar	12	6	19.5	51.5	22	17	24	SR12S6S
	12	8	19.5	51.0	22	19	24	SR12S8S
	12	10	19.0	52.5	22	22	24	SR14S10S
630 bar	14	10	20.5	56.0	24	22	27	SR14S12S
	14	12	20.5	55.5	24	24	27	SR14S12S
400 bar	16	12	20.0	55.5	27	24	30	SR16S12S
	16	14	21.5	59.0	27	27	30	SR16S14S
400 bar	20	10	22.0	61.5	32	22	36	SR20S10S
	20	12	22.0	61.0	32	24	36	SR20S12S
	20	16	23.0	64.5	32	30	36	SR20S16S
400 bar	25	16	25.5	69.5	41	30	46	SR25S16S
	25	20	25.5	73.0	41	36	46	SR25S20S
400 bar	30	20	26.0	76.5	46	36	50	SR30S20S
	30	25	26.5	79.5	46	46	50	SR30S25S
315 bar	38	30	29.5	89.5	55	50	60	SR38S30S

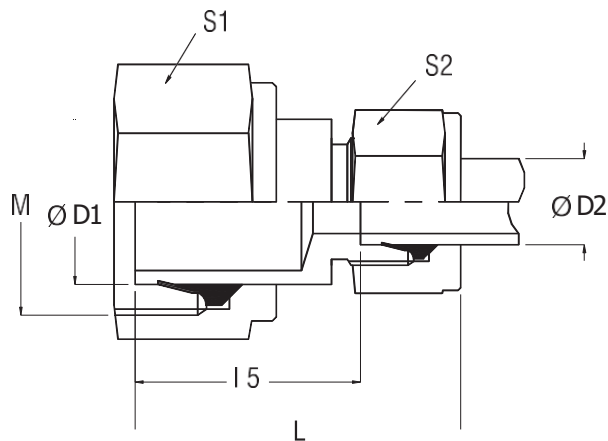
* Dimensions given are approx. figures with tightened Nut.



Pr. (bar)	ØD1	ØD2	M	I 5	L*	S 1	S 2	Part No.
250 bar	8	6	M14 x 1.5	23.5	39.0	17	14	RSP8L6L
250 bar	10	6	M16 x 1.5	23.5	39.0	19	14	RSP10L6L
	10	8	M16 x 1.5	23.5	38.5	19	17	RSP10L8L
250 bar	12	6	M18 x 1.5	23.5	39.0	22	14	RSP12L6L
	12	8	M18 x 1.5	23.5	38.5	22	17	RSP1208L
	12	10	M18 x 1.5	24.5	40.0	22	19	RSP1210L
250 bar	15	6	M22 x 1.5	23.5	39.0	27	14	RSP15L6L
	15	8	M22 x 1.5	23.5	38.5	27	17	RSP15L8L
	15	10	M22 x 1.5	24.5	40.0	27	19	RSP15L10L
	15	12	M22 x 1.5	24.5	39.5	27	22	RSP15L12L
160 bar	18	6	M26 x 1.5	24.5	40.0	32	14	RSP18L6L
	18	8	M26 x 1.5	24.5	39.5	32	17	RSP18L8L
	18	10	M26 x 1.5	25.5	41.0	32	19	RSP18L10L
	18	12	M26 x 1.5	25.5	40.5	32	22	RSP18L12L
	18	15	M26 x 1.5	26.5	42.5	32	27	RSP18L15L
160 bar	22	6	M30 x 2.0	25.5	41.0	36	14	RSP22L6L
	22	8	M30 x 2.0	25.0	40.5	36	17	RSP22L8L
	22	10	M30 x 2.0	26.5	42.0	36	19	RSP22L10L
	22	12	M30 x 2.0	26.5	41.5	36	22	RSP22L12L
	22	15	M30 x 2.0	27.5	43.5	36	27	RSP22L15L
	22	18	M30 x 2.0	27.0	44.0	36	32	RSP22L18L
100 bar	28	6	M36 x 2.0	26.5	42.0	41	14	RSP28L6L
	28	8	M36 x 2.0	26.5	41.5	41	17	RSP28L8L
	28	10	M36 x 2.0	27.5	43.0	41	19	RSP28L10L
	28	12	M36 x 2.0	27.5	42.5	41	22	RSP28L12L
	28	15	M36 x 2.0	28.5	44.5	41	27	RSP28L15L
	28	18	M36 x 2.0	28.0	45.0	41	32	RSP28L18L
	28	22	M36 x 2.0	30.0	47.0	41	36	RSP28L22L

* Dimensions given are approx. figures with tightened Nut.

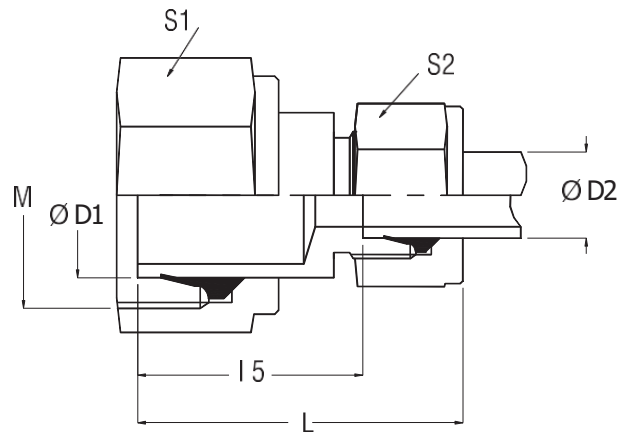
All Dimensions are in mm.



Pr. (bar)	Ø D1	Ø D2	M	I 5	L*	S 1	S 2	Part No.
250 bar	8	6	M16 x 1.5	25.0	40.5	19	17	RSP8S6S
250 bar	10	6	M18 x 1.5	26.0	41.5	22	17	RSP10S6S
	10	8	M18 x 1.5	26.0	41.0	22	19	RSP10S8S
250 bar	12	6	M20 x 1.5	27.0	42.5	24	17	RSP12S6S
	12	8	M20 x 1.5	27.0	42.0	24	19	RSP12S8S
	12	10	M20 x 1.5	26.5	43.5	24	22	RSP12S10S
250 bar	14	6	M22 x 1.5	29.0	44.5	27	17	RSP14S6S
	14	8	M22 x 1.5	29.0	44.0	27	19	RSP14S8S
	14	10	M22 x 1.5	28.5	45.5	27	22	RSP14S10S
	14	12	M22 x 1.5	28.5	45.0	27	24	RSP14S12S
160 bar	16	6	M24 x 1.5	29.0	44.5	30	17	RSP16S6S
	16	8	M24 x 1.5	29.0	44.0	30	19	RSP16S08S
	16	10	M24 x 1.5	28.5	45.5	30	22	RSP16S10S
	16	12	M24 x 1.5	28.5	45.5	30	24	RSP16S12S
	16	14	M24 x 1.5	30.0	48.5	30	27	RSP16S14S
160 bar	20	6	M30 x 2.0	34.0	49.5	36	17	RSP20S06S
	20	8	M30 x 2.0	34.0	49.0	36	19	RSP20S08S
	20	10	M30 x 2.0	33.5	50.5	36	22	RSP20S10S
	20	12	M30 x 2.0	33.5	50.0	36	24	RSP20S12S
	20	14	M30 x 2.0	35.0	53.5	36	27	RSP20S14S
	20	16	M30 x 2.0	34.5	53.5	36	30	RSP20S16S
100 bar	25	6	M36 x 2.0	37.0	52.5	46	17	RSP25S06S
	25	8	M36 x 2.0	37.0	52.0	46	19	RSP25S08S
	25	10	M36 x 2.0	36.5	53.5	46	22	RSP25S10S
	25	12	M36 x 2.0	36.5	53.0	46	24	RSP25S12S
	25	14	M36 x 2.0	37.0	55.5	46	27	RSP25S14S
	25	16	M36 x 2.0	36.5	55.5	46	30	RSP25S16S
	25	20	M36 x 2.0	37.5	60.0	46	36	RSP25S20S

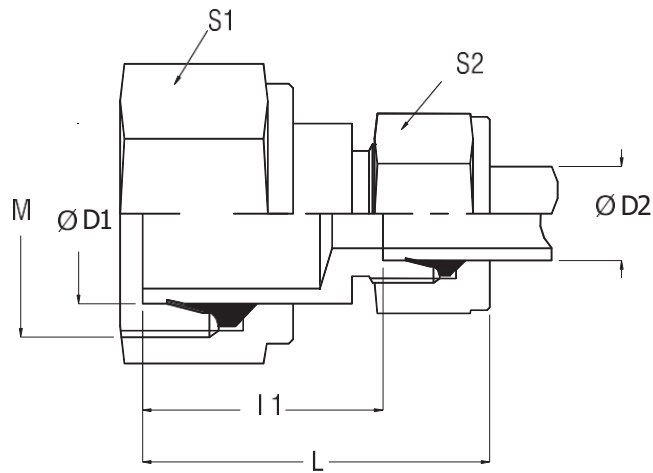
* Dimensions given are approx. figures with tightened Nut.

All Dimensions are in mm.



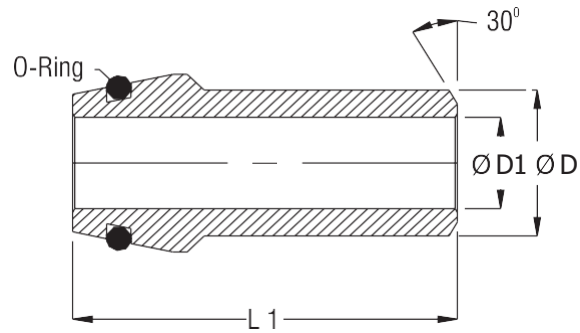
Pr. (bar)	Ø D1	Ø D2	M	I 5	L*	S 1	S 2	Part No.
100 bar	35	6	M45 x 2.0	31.5	47.0	50	14	RSP35L6L
	35	8	M45 x 2.0	31.5	46.5	50	17	RSP35L8L
	35	10	M45 x 2.0	32.5	48.0	50	19	RSP35L10L
	35	12	M45 x 2.0	32.5	47.5	50	22	RSP35L12L
	35	15	M45 x 2.0	33.5	49.5	50	27	RSP35L15L
	35	18	M45 x 2.0	33.0	50.0	50	32	RSP35L18PL
	35	22	M45 x 2.0	35.0	52.0	50	36	RSP35L22L
	35	28	M45 x 2.0	35.0	53.0	50	41	RSP35L28L
100 bar	42	10	M52 X 2.0	33.5	49.0	60	19	RSP42L10L
	42	12	M52 X 2.0	33.5	48.5	60	22	RSP42L12L
	42	15	M52 X 2.0	34.5	50.5	60	27	RSP42L15L
	42	18	M52 X 2.0	34.0	52.0	60	32	RSP42L18L
	42	22	M52 X 2.0	36.0	53.0	60	36	RSP42L22L
	42	28	M52 X 2.0	36.0	54.0	60	41	RSP42L28L
	42	35	M52 X 2.0	35.0	58.0	60	50	RSP42L35L

* Dimensions given are approx. figures with tightened Nut.



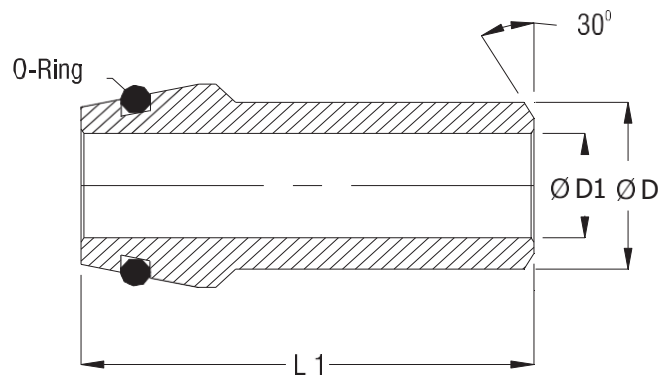
Pr. (bar)	ØD1	ØD2	M	I 5	L*	S 1	S 2	Part No.
100 bar	30	6	M42 x 2.0	39.0	54.5	50	17	RSP30S6S
	30	8	M42 x 2.0	39.0	54.0	50	19	RSP30S8S
	30	10	M42 x 2.0	38.5	55.5	50	22	RSP30S10S
	30	12	M42 x 2.0	38.5	58.5	50	24	RSP30S12S
	30	14	M42 x 2.0	40.0	58.5	50	27	RSP30S14S
	30	16	M42 x 2.0	39.5	62.0	50	30	RSP30S16S
	30	20	M42 x 2.0	39.5	65.0	50	36	RSP30S20S
	30	25	M42 x 2.0	40.0	58.5	50	46	RSP30S25S
100 bar	38	6	M52 x 2.0	43.0	58.5	60	17	RSP38S6S
	38	8	M52 x 2.0	43.0	58.0	60	19	RSP38S8S
	38	10	M52 x 2.0	42.5	59.5	60	22	RSP38S10S
	38	12	M52 x 2.0	42.5	59.0	60	24	RSP38S12S
	38	14	M52 x 2.0	44.0	62.5	60	27	RSP38S14S
	38	16	M52 x 2.0	43.5	62.5	60	30	RSP38S16S
	38	20	M52 x 2.0	43.5	66.0	60	36	RSP38S20S
	38	25	M52 x 2.0	44.0	69.0	60	46	RSP38S25S
	38	30	M52 x 2.0	44.5	72.5	60	50	RSP38S30S

* Dimensions given are approx. figures with tightened Nut.



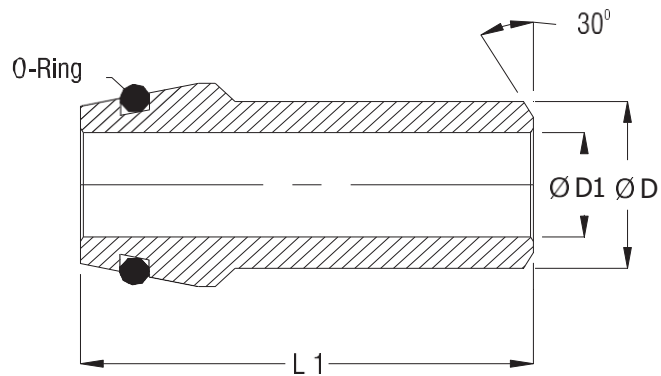
High Pressure

Max Pr. (bar)	Tube size od x Wall	O'Ring ID x CSD	ØD	ØD1	ØD2	L 1	Part No.
237	6 x 1.0	4 x 1.5	6	2.5	4	31.5	WNP610
237	6 x 1.5			2.5	3		WNP615 #
237	8 x 1.0	6 x 1.5	6	4.0	6	31.0	WNP810
237	8 x 1.5			4.0	5		WNP815 #
237	8 x 2.0			4.0	--		WNP820



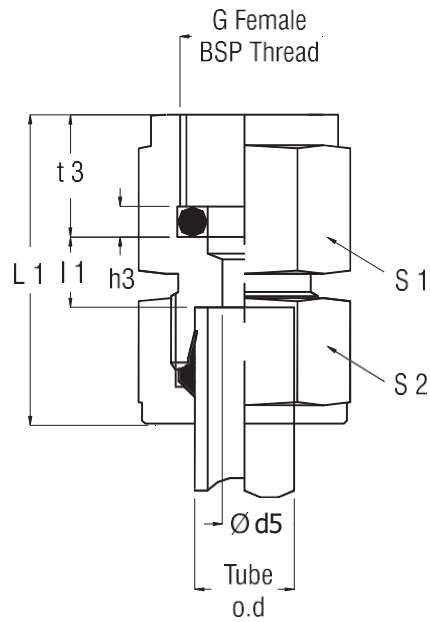
Max Pr. (bar)	Tube size od x Wall	O'Ring ID x CSD	ØD	ØD1	ØD2	L 1	Part No.
282	15 x 1.5	12 x 2.0	15	10	12	34.5	WNP1515
376	15 x 2.0			10	11	34.5	WNP1520
409	15 x 2.5			10	--	34.5	WNP1525
313	18 x 2.0	15 x 2.0	18	13	14	36.5	WNP1820
392	18 x 2.5			13	--	36.5	WNP1825
409	18 x 3.0			12	--	36.5	WNP1830
256	22 x 2.0	20 x 2.0	22	17	18	39.0	WNP2220
320	22 x 2.5			17	--	39.0	WNP2225
252	28 x 2.5	26 x 2.0	28	23	--	41.5	WNP2825
302	28 x 3.0			22	--	41.5	WNP2830
403	28 x 4.0			20	--	41.5	WNP2840
242	35 x 3.0	32 x 2.5	35	29	--	48.5	WNP3530
322	35 x 4.0			27	--	48.5	WNP3540
403	35 x 5.0			25	--	48.5	WNP3550
134	42 x 2.0	38 x 2.5	42	36	38	49.0	WNP4220
201	42 x 3.0			36	--	49.0	WNP4230
269	42 x 4.0			34	--	49.0	WNP4240

All Dimensions are in mm.



Max Pr. (bar)	Tube size od x Wall	O'Ring ID x CSD	Ø D	ØD1	L 1	Part No.
237	10 x 10	7.5 x 1.5	10	6	32.5	WNP1010
370	10 x 1.5			6		WNP1015
508	10 x 2.0			6		WNP1020
302	12 x 1.5	9 x 1.5	12	8	32.5	WNP1215
415	12 x 2.0			8		WNP1220
532	12 x 2.5			7		WNP1225
350	14 x 2.0	10 x 2.0	14	10	39.0	WNP1420
448	14 x 2.5			9		WNP1425
548	14 x 3.0			8		WNP1430
221	16 x 1.5	12 x 2.0	16	11	39.5	WNP1615
302	16 x 2.0			11		WNP1620
387	16 x 2.5			11		WNP1625
473	16 x 3.0			10		WNP1630
237	20 x 2.0	16.3 x 2.4	20	14	46.5	WNP2020
302	20 x 2.5			14		WNP2025
370	20 x 3.0			14		WNP2030
508	20 x 4.0	20.3 x 2.4	25	12	52.5	WNP2040
289	25 x 3.0			19		WNP2530
397	25 x 4.0			17		WNP2540
508	25 x 5.0			15		WNP2550
237	30 x 3.0	25.3 x 2.4	30	24	56.5	WNP3030
325	30 x 4.0			22		WNP3040
415	30 x 5.0			20		WNP3050
508	30 x 6.0			18		WNP3060
251	38 x 4.0	33.3 x 2.4	38	30	63.5	WNP3840
320	38 x 5.0			28		WNP3850
391	38 x 6.0			26		WNP3860
464	38 x 7.0			24		WNP3870

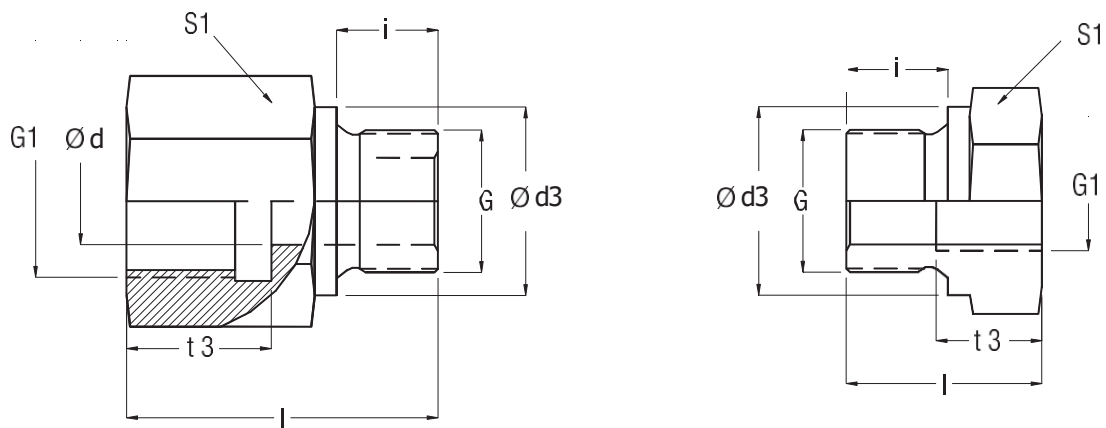
All Dimensions are in mm.



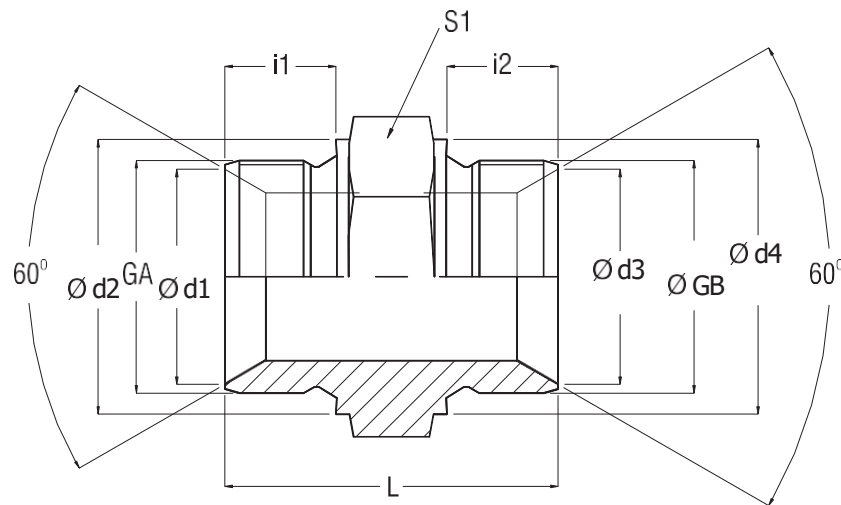
Series	TUBE o.d	G - Male BSP Threads	Ø d5	l 1	h 3	L 1*	S1	S2	t3	Part No.
LIGHT L	6	G 1/4	2.5	7.5	4.5	37.5	19	14	14.5	GA6LG02
	250 bar	8	G 1/4	5.5	7.5	37.0	19	17	14.5	GA8LG02
		10	G 1/4	5.5	8.5	38.5	19	19	14.5	GA10LG02
		12	G 1/4	5.5	8.5	38.0	19	22	14.5	GA12LG02
250 bar	6	G 3/8	2.5	9.5	5.5	41.5	22	14	16.5	GA6LG03
	8	G 3/8	5.5	9.5	5.5	41.0	22	17	16.5	GA8LG03
		10	G 3/8	5.5	10.5	42.5	22	19	16.5	GA10LG03
		12	G 3/8	5.5	10.5	42.0	22	22	16.5	GA12LG03
Heavy S	6	G 3/8	3.5	9.5	5.5	41.5	22	17	16.5	GA6SG03
	630 bar	8	G 3/8	3.5	9.5	41.0	22	19	16.5	GA8SG03
		10	G 3/8	7.0	9.0	42.5	22	22	16.5	GA10SG03
		12	G 3/8	7.0	9.0	42.0	22	24	16.5	GA12SG03
630 bar	6	G 1/2	3.5	11.0	5.5	46.5	27	17	20.0	GA6SG04
	8	G 1/2	3.5	11.0	5.5	46.0	27	19	20.0	GA8SG04
		10	G 1/2	7.0	10.5	47.5	27	22	20.0	GA10SG04
		12	G 1/2	7.0	10.5	47.0	27	24	20.0	GA12SG04

* Dimensions given are approx. figures with tightened Nut.

Note : Sealing ring will be furnished along with adaptor assembly Seal material : Nitrile 90 Shore.

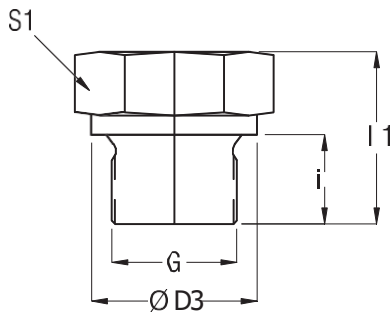


Pressure Bar	Male Thread G	Female Thread G	l	i	S1	Ød	Ød3	t3	Part No.
630	G 1/8 A	G 1/4 A	31.0	8	19	4	14	17.0	MFAG01G02
630	G 1/8 A	G 3/8 A	32.0	8	24	4	14	17.0	MFAG01G03
630	G 1/4 A	G 1/8 A	28.0	12	19	5	18	12.0	MFAG02G01
630	G 1/4 A	G 3/8 A	36.0	12	24	5	18	17.0	MFAG02G03
630	G 1/4 A	G 1/2 A	40.0	12	30	5	18	20.0	MFAG02G04
630	G 1/4 A	G 3/4 A	43.0	12	36	5	18	22.0	MFAG02G06
630	G 3/8 A	G 1/8 A	22.5	12	22	--	22	8.0	MFAG03G01
630	G 3/8 A	G 1/4 A	36.0	12	22	8	22	17.0	MFAG03G02
630	G 3/8 A	G 1/2 A	41.0	12	30	8	22	20.0	MFAG03G04
400	G 3/8 A	G 3/4 A	44.0	12	36	8	22	22.0	MFAG03G06
630	G 1/2 A	G 1/4 A	24.0	14	27	--	26	12.0	MFAG04G02
630	G 1/2 A	G 3/8 A	36.0	14	27	12	26	17.0	MFAG04G03
400	G 1/2 A	G 3/4 A	46.0	14	36	12	26	22.0	MFAG04G06
400	G 1/2 A	G 1 A	49.0	14	41	12	26	24.5	MFAG04G08
250	G 1/2 A	G 1-1/4 A	53.0	14	55	10	26	26.5	MFAG04G10
400	G 3/4 A	G 1/4 A	26.0	16	32	--	32	12.0	MFAG06G02
400	G 3/4 A	G 3/8 A	26.0	16	32	--	32	12.0	MFAG06G03
400	G 3/4 A	G 1/2 A	41.0	16	32	16	32	20.0	MFAG06G04
400	G 3/4 A	G 1 A	51.0	16	41	16	32	24.5	MFAG06G08
250	G 3/4 A	G 1-1/4 A	55.0	16	55	16	32	26.5	MFAG06G10
250	G 3/4 A	G 1-1/2 A		16	60	16	32	28.5	MFAG06G12
400	G 1 A	G 1/4 A	29.0	18	41	--	39	12.0	MFAG08G02
400	G 1 A	G 3/8 A		18	41	--	39	12.0	MFAG08G03
400	G 1 A	G 1/2 A	29.0	18	41	--	39	14.0	MFAG08G04
400	G 1 A	G 3/4 A		18	41	20	39	22.0	MFAG08G06
250	G 1 A	G 1-1/4 A	57.0	18	55	20	39	26.5	MFAG08G10
250	G 1 A	G 1-1/2 A		18	60	20	39	28.5	MFAG08G12
250	G 1-1/4 A	G 1/2 A	32.0	20	50	--	49	14.0	MFAG10G04
250	G 1-1/4 A	G 3/4 A	32.0	20	50	--	49	16.0	MFAG10G06
250	G 1-1/4 A	G 1 A	52.0	20	50	25	49	24.5	MFAG10G08
250	G 1-1/4 A	G 1-1/2 A	60.0	20	60	25	49	28.5	MFAG10G12
250	G 1-1/2 A	G 1-1/2 A	36.0	22	55	--	55	14.0	MFAG12G04
250	G 1-1/2 A	G 1-3/4 A	36.0	22	55	--	55	16.0	MFAG12G06
250	G 1-1/2 A	G 1 A	36.0	22	55	--	55	18.0	MFAG12G08
250	G 1-1/2 A	G 1-1/4 A	58.0	22	55	32	55	26.5	MFAG12G10



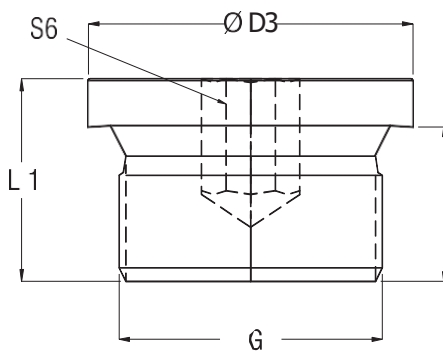
G _A	G _B	Ø D2	Ø D2	Ø D3	Ø D4	i 1	i 2	L	S1	Part No.
G 1/8	G 1/8	7.49	14	7.49	14	8	8	23.0	14	HAG01G01
G 1/8	G 1/4	7.49	14	10.40	18	8	11	27.5	19	HAG01G02
G 1/4	G 1/4	10.40	18	10.40	18	11	11	31.0	19	HAG02G02
G 1/4	G 3/8	10.40	18	13.97	22	11	11	33.5	22	HAG02G03
G 1/4	G 1/2	10.40	18	17.52	26	11	14	37.0	27	HAG02G04
G 3/8	G 3/8	13.97	22	13.97	22	11	11	35.0	22	HAG03G03
G 3/8	G 1/2	13.97	22	17.52	26	11	14	38.5	27	HAG03G04
G 3/8	G 3/4	13.97	22	22.86	32	14	16	41.5	32	HAG03G06
G 1/2	G 1/2	17.52	26	17.52	26	14	14	41.0	27	HAG04G04
G 1/2	G 3/4	17.52	26	22.86	32	14	16	44.0	32	HAG04G06
G 1/2	G 1	17.52	26	28.70	39	16	18	46.0	41	HAG04G08
G 3/4	G 3/4	22.86	32	22.86	32	16	16	46.0	32	HAG06G06
G 3/4	G 1	22.86	32	28.70	39	16	18	48.0	41	HAG06G08
G 3/4	G 1-1/4	22.86	32	36.83	49	18	20	52.0	50	HAG06G10
G 1	G 1	28.70	39	28.70	39	18	18	50.0	41	HAG08G08
G 1	G 1-1/4	28.70	39	36.83	49	18	20	54.0	50	HAG08G10
G 1	G 1-1/2	28.70	39	42.67	55	20	22	58.0	55	HAG08G12
G 1-1/4	G 1-1/4	36.83	49	36.83	49	20	20	56.0	50	HAG10G10
G 1-1/4	G 1-1/2	36.83	49	42.67	55	20	22	60.0	55	HAG10G12
G 1-1/2	G 1-1/2	42.67	55	42.67	55	22	22	62.0	55	HAG12G12

Hex Head Plug



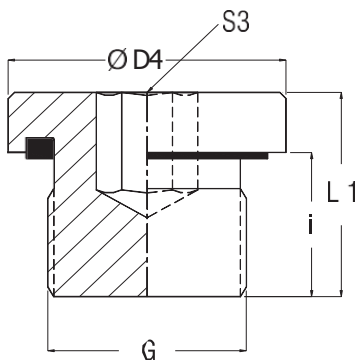
G Male thread BSP	Ø D3	i	I 1	S 1	Part No.
G 1/8	14	8	14.5	14	HHPG01
G 1/4	18	12	20	19	HHPG02
G 3/8	22	12	22.5	22	HHPG03
G 1/2	26	14	24	27	HHPG04
G 3/4	32	16	26	32	HHPG06
G 1	39	16	27	41	HHPG08
G 1-1/4	49	16	28	50	HHPG10
G 1-1/2	55	16	30	55	HHPG12

Socket Head Plug



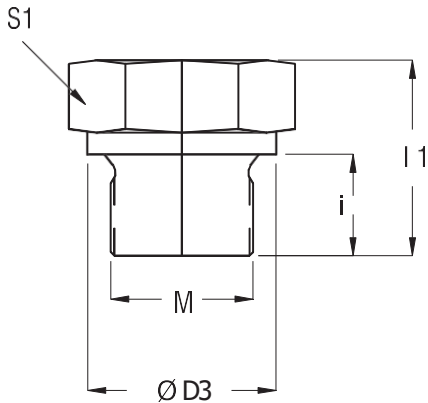
G Male thread BSP	Ø D3	i	I 1	S 6	Part No.
G 1/8	14	8	11	5	SHPG01
G 1/4	18	12	15	6	SHPG02
G 3/8	22	12	15	8	SHPG03
G 1/2	26	14	18	10	SHPG04
G 3/4	32	16	20	12	SHPG06
G 1	39	16	21	17	SHPG08
G 1-1/4	49	16	21	22	SHPG10
G 1-1/2	55	16	21	24	SHPG12

Socket Head Plug with Elastomeric seal



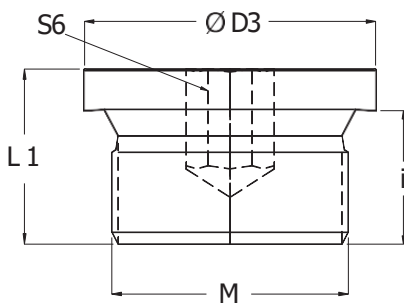
G Male thread BSP	Ø D4	i	L 1	S 3	Part No.
G 1/8	14	8	13	5	SHPG01ES
G 1/4	19	12	17	6	SHPG02ES
G 3/8	22	12	17	8	SHPG03ES
G 1/2	27	14	20	10	SHPG04ES
G 3/4	32	16	22	12	SHPG06ES
G 1	40	16	24	17	SHPG08ES
G 1-1/4	50	16	24	22	SHPG10ES
G 1-1/2	55	16	24	24	SHPG12ES

Hex Head Plug



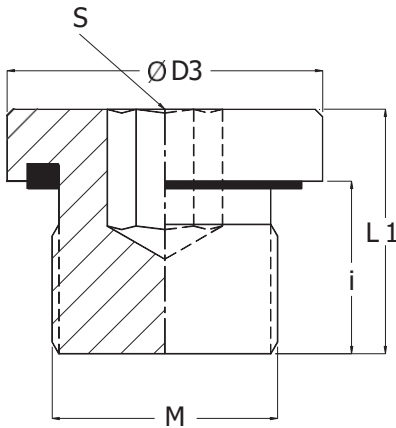
M Male thread Metric	Ø D3	i	I 1	S 1	Part No.
M10 x 1.0	14	8	13.5	14	HHPM10
M12 x 1.5	17	12	18.5	17	HHPM12
M14 x 1.5	19	12	19.0	19	HHPM14
M16 x 1.5	21	12	20.0	22	HHPM16
M18 x 1.5	23	12	20.5	24	HHPM18
M20 x 1.5	25	14	23.5	27	HHPM20
M22 x 1.5	27	14	24.0	27	HHPM22
M26 x 1.5	31	16	26.0	32	HHPM26
M27 x 2.0	32	16	26.0	32	HHPM27
M33 x 2.0	39	16	27.0	41	HHPM33
M42 x 2.0	49	16	28.0	50	HHPM42
M48 x 2.0	55	16	30.0	55	HHPM48

Socket Head Plug



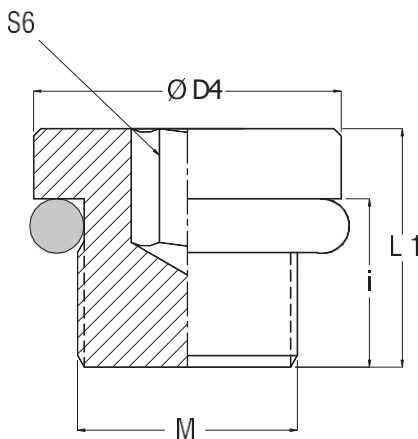
M Male thread Metric	Ø D3	i	I 1	S 6	Part No.
M10 x 1.0	14	8	12.0	5	SHPM10
M12 x 1.5	17	12	17.0	6	SHPM12
M14 x 1.5	19	12	17.0	6	SHPM14
M16 x 1.5	22	12	17.0	8	SHPM16
M18 x 1.5	24	12	17.0	8	SHPM18
M20 x 1.5	26	14	19.0	10	SHPM20
M22 x 1.5	27	14	19.0	10	SHPM22
M26 x 1.5	32	16	21.0	12	SHPM26
M27 x 2.0	32	16	21.0	12	SHPM27
M33 x 2.0	40	16	22.5	17	SHPM33
M42 x 2.0	50	16	22.5	22	SHPM42
M48 x 2.0	55	16	22.5	24	SHPM48

Socket Head Plug with Elastomeric seal



M Male thread Metric	ØD3	i	L 1	S 1	Part No.
M10 x 1.0	14	14	12.0	5	SHPM10ES
M12 x 1.5	17	17	17.0	6	SHPM12ES
M14 x 1.5	19	19	17.0	6	SHPM14ES
M16 x 1.5	21	22	17.0	8	SHPM16ES
M18 x 1.5	23	24	17.0	8	SHPM18ES
M20 x 1.5	25	26	19.0	10	SHPM20ES
M22 x 1.5	27	27	19.0	10	SHPM22ES
M26 x 1.5	31	32	21.0	12	SHPM26ES
M27 x 2.0	32	32	21.0	12	SHPM27ES
M33 x 2.0	39	40	22.5	17	SHPM33ES
M42 x 2.0	49	50	22.5	22	SHPM42ES
M48 x 2.0	55	55	22.5	24	SHPM48ES

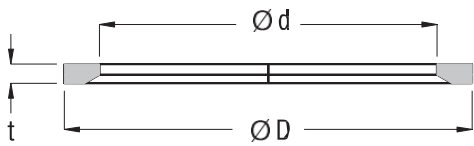
Socket Head Plug with O' Ring



M Male thread Metric	ØD4	i	L 2	S 6	Part No.
M10 x 1.0	13	10.0	14.0	5	SHPM100R
M12 x 1.5	17	11.5	16.5	6	SHPM120R
M14 x 1.5	19	11.5	16.5	6	SHPM140R
M16 x 1.5	21	13.0	18.0	8	SHPM160R
M18 x 1.5	23	14.5	19.5	8	SHPM180R
M22 x 1.5	27	15.5	20.5	10	SHPM220R
M26 x 1.5	31	16.0	21.0	12	SHPM260R
M27 x 2.0	32	19.0	24.0	12	SHPM270R
M33 x 2.0	38	19.0	25.5	17	SHPM330R
M42 x 2.0	48	19.5	26.0	22	SHPM420R

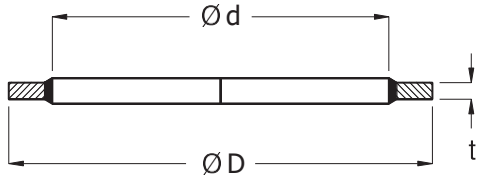
TUBE FITTINGS

Elastomeric Seals



For Male Metric (M) threads	For Male BSPP (G) threads	Ød	ØD	t	Part No.
M10 x 1.0	G 1/8	8.40	11.9	1.0	ESG01M10
M12 x 1.5	---	9.80	14.4	1.5	ESM12
M14 x 1.5	G 1/4	11.6	16.5	1.5	ES02M14
M16 x 1.5	---	13.8	18.9	1.5	ESM16
---	G 3/8	14.7	18.9	1.5	ESG03
M18 x 1.5	---	15.7	20.9	1.5	ESM18
M20 x 1.5	---	17.8	22.9	1.5	ESM20
---	G 1/2	18.5	23.9	1.5	ESG04
M22 x 1.5	---	19.6	24.3	1.5	ESM22
M26 x 1.5	G 3/4	23.9	29.2	1.5	ESG06M26
M27 x 2.0	G 3/4	23.9	29.2	1.5	ESG06M27
M33 x 2.0	G1	29.7	35.7	2.0	ESG08M33
M42 x 2.0	G1 1/4	38.8	45.8	2.0	ESG10M42
M48 x 2.0	G1 1/2	44.7	50.7	2.0	ESG12M48

Bonded Seals



For male thread BSP	Ød	Ød	t	Part No.
G 1/8	10.37	15.88	1.80	BSG01
G 1/4	13.74	20.57	1.80	BSG02
G 3/8	17.28	23.80	1.80	BSG03
G 1/2	21.54	28.58	2.30	BSG04
G 3/4	27.05	34.93	2.30	BSG06
G 1	33.89	42.80	2.85	BSG08
G 1-1/4	42.93	52.38	2.85	BSG10
G 1-1/2	48.44	58.60	2.85	BSG12
G 2	60.58	73.03	2.85	BSG16

All Dimensions are in mm.

